



The Reflector



Volume 64, Issue 2

OCTOBER 2011

CALENDAR

- **Oct. 3**
Instruction Night
- **Oct. 7**
Projected Image entry deadline
- **Oct. 10**
7:30 pm — Projected Image Competition
- **Oct. 13, 27**
Photoshop Elements Class; Cokesbury
- **Oct. 14**
Print entry deadline
- **Oct. 17**
7:30 pm
Print Competition
- **Oct. 31**
7:30 pm
Program Night

IN THIS ISSUE...

Erik Kissa Honored	2
PSA International Acceptances	3
Exhibits	3
Competing in PSA	4
PSA Inter-Club	5
Instruction Night	6
Guest Speaker	6
Elements Classes	6
WIEP Judges Banquet	7

>> The Monthly Ramble

Last month I had the pleasure of attending an “Old School” reunion back in my hometown, Amityville, New York, (Yes, that Amityville). It recently started an annual picnic at a local state park. When I decided to attend after a 47- year absence I decided to open my high school photo album. I started plucking and scanning the well-preserved prints from 1963. With the help of Photoshop I was able to create nearly 50 photographs depicting my years, friends, and the events of my senior high school year.

I put them on a board and placed it near the entrance of the reunion site. They were a big hit, and we asked the people pictured to take their likeness when they left the site.

In the age of digital photography the trend is to photograph with cell phones and save everything on the computer if saved at all. A much smaller number of people print their work these days.

Prints have always been the media that we studied. Projected images are more brilliant and present much larger, but they are usually visible for a few moments at best. With prints we actually look deeper into the image. A printed image is presented more to the photographer’s actual will. He controls the size, paper, mounting & framing, which all contributes to the print’s personality.

Prints reveal more when studied but sometimes need more than the initial impact to be appreciated.

Since we joined the computer age we have changed storage from tape drives, to floppy disk, to Zip disk, and many people now store on external drives that will eventually fail. The trend is now to store in the “Cloud”. While redundant back-up is the only way to feel your images are secure, we all can relate to sifting through the shoeboxes of black and white images of family and friends taken many years ago. Perhaps we might reconsider the shoebox a storage media whose time may come again; after all it has survived many years of storage evolution.

On a final note, I have always felt that one of the best ways to improve my photography was to study notable photographers. Margaret Bourke White’s work and life have been a great inspiration, and her style has influenced much of my work. Each month I will drop a few names. Google them..... There may be a quiz---

**Dorothea Lange
Minor White**

BOB HUNT,
President



>> Field Trip: Washington DC

Our field trip schedule for this year will give everyone an opportunity to shoot a wide variety of subjects.

Each year we schedule one big field trip. This year it is to **Washington DC**, scheduled for **November 12-13**.

We are trying something new by adding an option for an overnight stay in a hotel just outside of Washington. There has been a lot of interest in a two-day trip and will give those who elect to stay an opportunity for an early morning shoot the following day. For those who do not stay, there will be a long day of shooting and we will return the same day. **We ask that everyone sign up by October 3rd**, so we can reserve the rooms and the vans that will be required. At every

meeting, we will be making an announcement regarding the trip and will also have information on the cost and itinerary. If you haven’t been on a field trip in the past, I would encourage you to attend. It will be a good one.

In almost every monthly competition we see amazing photos from our past trips. After the excursions, we select one evening to display some of the photographs from the members who participated and see what a variety of different perspectives we all have. **For more information contact Steve at 302.540.9283 ssieja@milestonede.com**

STEVE SIEJA, *Field Trip Coordinator*

President — BOB HUNT
302.764.1363 / MakingCopy@aol.com

Vice President — MARVIN GERSTEIN
302.475.5939 / marvtu@aol.com

Recording Secretary
MARTY REED — 302.655.1439
marty-mar@comcast.net

Treasurer/Corp. Secretary
DICK GREENWOOD — 610.444.1793
rdgreenwood@comcast.net

Exhibition Chair
PETE LOUNSBURY — 302.636.0868
lounsburyus@comcast.net

Education Director — BOB COFFEY
610.388.2741 / Bobcoffey@aol.com

Projected Image Director
MARK REED — 302.655.1439
mark4reed@comcast.net

Print Director — KARL LECK
610.388.0298 / karleck@verizon.net

Program Director
EILEEN FURLONG — 302.764.6922
efurlong@comcast.net

Reflector Editor — THERESA YANICK
302.276.4925 / tmyanick@comcast.net

Membership
FRED ROSENBERG — 610.388.6907
membership@dps-photo.org

Field Trips
STEVEN SIEJA — 302.540.9283
ssieja@MilestoneDe.com

Awards Committee
HELEN GERSTEIN — 302.475.5939
helenmarv@aol.com

Equipment Chair
ED FORD — 302.290.6727
fordeh1964@gmail.com

Publicity Chair — CAROLE CLARKE
610.358.5191 / cnclarke@aol.com

Judges Chair
BOB MCCAFFREY — 302.475.9693
bmac076@mac.com

Monthly Hospitality Chair
CINDY MCCAFFREY — 302.475.9693
cmac6@mac.com

Standards Chair — DEE LANGEVIN
302.376.7645 / cnl001@verizon.net

DPS Webmaster — JOHN DAVIS
webmaster@dps-photo.org

The Delaware Camera Club (DCC) was established January 28, 1931. DCC is a charter member of the Photographic Society of America and The Delaware Valley Council of Camera Clubs. In 2002 the name was changed to the Delaware Photographic Society (DPS) and the Society became a tax deductible educational organization.

>> DPS Member Honored In Colorado Springs



ERIK KISSA was awarded the honor of Associate of PSA at the 2011 Conference Honors Banquet in Colorado Springs on September 24, entitling him to use the letters APSA following his name. This prestigious designation is conferred on selected members each year in recognition of photographic excellence and exemplary service. Not only has Erik served locally as a mentor, workshop and program director, and WIEP chairman, but also internationally as a consultant for PSA and technical expert for the United Nations,

and professionally as a chemist and author on research topics related to color.

In addition to honors, many of the other letters following PSA members' names represent distinctions, which are automatically earned through extensive exhibition acceptances. At the conference Erik was also presented a certificate in recognition of his MPSA distinction. He is an active exhibitor, with 194 PSA recognized acceptances last year alone, and more than 2900 cumulative acceptances that have resulted in five Stars and six Galaxies in Color Projected, five Stars and two Galaxies in Photo Travel, four stars in Photojournalism, three Stars in Nature, and four Stars in Small Color Prints.

DPS congratulates Erik Kissa, APSA, MPSA!

>> Sixty International Acceptances For DPS Members

Seven DPS members gained acceptances in this year's PSA International. The PJ sections were judged in Wilmington on August 8, and the Photo Travel, Nature, 3D, pictorial print and projected sections were judged in various other locations throughout the country. All of the following images were exhibited during the annual PSA conference held this year in Colorado Springs, September 18 - 25.

ED FORD — 4 PJ (one HM)

DOUG HOLVECK — 3 PJ

ERIK KISSA — 2 EID, 2 Small Color Print, 3 CPID, (PJ judge unable to enter)

DEE LANGEVIN — 1 Nature, 1 PJ, 2 PT, 3 CPID, 5 EID

LYNN MANISCALCO — 1 3D, 1 CPID, 3 PT, 3 EID, 10 PJ (one medal)

YAPRAK SOYSAL — 2 EID

TOM TAUBER — 1 CPID, 1 PJ HM, 2 Small and 3 Large Color Print, 7 PT (one HM)

Cumulative acceptances in PSA recognized exhibitions, such as this one and the WIEP, qualify members for star ratings in the various divisions of PSA. WIEP acceptances

in CPID (color projected), PPD (large and small prints) and PJ (projected and prints) can be applied to star ratings in those divisions. The PSA Journal also lists many qualifying exhibitions with Nature and Photo Travel sections. **Members with 18 or more acceptances in any division can contact our PSA rep Erik Kissa ekissa@aol.com for information on submitting them for a PSA star rating.**

PSA distinctions are based on specific numbers of stars, beginning with PPSA (proficiency in PSA), which is granted upon attaining 288 qualifying acceptances, EPSA (excellence) requiring 700 exhibition acceptances that have been applied to star ratings, and two new designations, MPSA (master) and GMPSA (grandmaster), now available to exhibitors with more than 1500 and 3000 acceptances respectively.

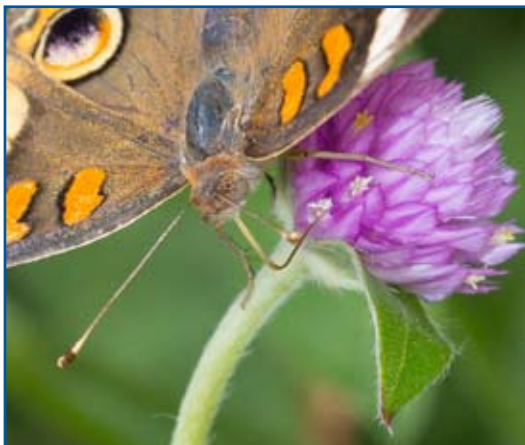
Other letters seen following the names of some PSA members, APSA and FPSA, signify Associate and Fellow, which are prestigious honors conferred by PSA on selected members in recognition of photographic excellence and exemplary service.

LYNN MANISCALCO, *Awards Committee*

>> Mt. Cuba Center Exhibit

The Mt. Cuba Center will hang a juried exhibition of art made by people who participated in art and photography workshops or classes in their gardens. Each participant was allowed to submit up to three framed works. The exhibit, *Art In Nature*, will hang in the Mt. Cuba Center gallery from September 12 to December 3. Three DPS members, Karl Leck, Dave Osberg, and Jane Strobach, each had all three of their photographs accepted for exhibition.

"The Buckeye and the Gomphrena"
by DAVE OSBERG



>> DPS Members Exhibit At Longwood Gardens

The Essence of Fall in the Brandywine Valley, a juried exhibit by members of the Delaware Photographic Society, will run through October 25 in the Conservatory Gallery.

Garden hours are from 9am to 5pm daily. For more information on Longwood Gardens activities, refer to their website at www.longwoodgardens.org

SHARON COFFEY

"Frosting"
by KARL LECK



>> Congratulations!

DPS member, Gary Regulski, has his first exhibit on display at Colourworks in Wilmington. *"Untouched by Humans: A Photographic Study in Black and White"* is worth taking a look at. Gary's subjects run the gamut from macro to landscape, black and white to infrared. You just won't see any human subjects in this work. The show will be on display until Oct. 4th. **Colourworks**, 1902 Superfine Lane, Wilmington, DE www.colourworks.com

THUMBNAILS

- Instruction Night is held the first Monday of the month at 7:30pm.
 - Competition nights are held on the second and third Mondays at 7:30pm.
 - Program night is the last Monday of the month October—March at 7:30pm.
 - Location: duPont Pavilion, Cokesbury Village, 726 Loveville Rd, Hockessin, DE 19707.
- Guest speaker programs are presented in the Cokesbury auditorium on Level C.
- Membership dues should be addressed to: DPS Treasurer, Dick Greenwood 301 Lawnfield Place, Kennett Square, PA 19348.

Dues: \$35, individuals; \$25, others at the same address; half the individual fee for junior or nonresident members; first-year members, \$20 per person.

- The Reflector is published by the Delaware Photographic Society. Material may not be reproduced without written permission. Please send announcements or articles to Theresa Yanick at tmyanick@comcast.net.
- Members are encouraged to participate in the Yahoo group, DPS-Exchange, DPSExchange@yahoo.com
- Visit our Web site at: www.dps-photo.org



This program is made possible, in part, by grants from the Delaware Division of the Arts, a state agency dedicated to nurturing and supporting the arts in Delaware, in partnership with the National Endowment for the Arts.

>> Competing in PSA-Recognized International Exhibitions

The Wilmington International is one of many international exhibitions recognized by the Photographic Society of America (PSA). I started competing in my first non-WIEP exhibition in October 2010 and have since received many acceptances and a gratifying number of awards, including a PSA Gold and several PSA Silver medals.

Why compete in these exhibitions? The main reason is the multiple feedback. We all know that juries are fickle. In our DPS competitions, we are restricted to submitting our images only once (if they are accepted). In order to get a more reliable measure of the quality of our images, at least as perceived by juries, we can send our images to as many different international competitions as we like. This is a valuable tool for improving one's photographic and critical skills.

How to compete in these exhibitions? Although PSA membership is not a prerequisite, it is a great help. The forthcoming exhibitions are listed in the PSA Journal, grouped by PSA divisions (Color Projected, Prints, Photojournalism, Photo Travel, etc.). Deadlines, website and email addresses, payment method and other information are included. Especially painless to enter are the digital exhibitions. Once your images are formatted, it takes only a few minutes to enter them at the exhibition's website. Entry fees for single judgments are usually around \$15. Payment via Paypal is easy. The process is very similar to the way we enter the digital section of the WIEP.

Particularly efficient are the so-called Circuits. These are exhibitions with multiple judgments. For example, the AC-Foto German Mega Circuit in October will have six judgments in three sections. This means that you can enter four images in each section and have it judged by six different juries, with a potential of winning 72 acceptances. Since the entry process is the same as for any other exhibition (although the entry fee is generally higher), circuits are a great time saver.

Feedback is straightforward. In most instances, entrants receive an email with the results within a few weeks after the judging. Sometime later, the winning images and a

comprehensive acceptance list will be posted on the website. A number of exhibitions still send out printed catalogs as we do for the WIEP, but there is usually an extra charge.

Acceptances in these exhibitions count towards PSA Stars. Each PSA division awards their own stars, but the number of acceptances required is the same for each division. For example, for the first star one needs 18 acceptances with six different titles (images), for the second 36 acceptances with 12 titles, for the third 72 acceptances with 24 titles, and so on.



"Seeing Eye Dog" earned a PSA Gold and Silver medal and four Honorable Mentions in the Travel Photo Theme section "The Door" at NORGA.

I am currently on my way to get my third star in the Color Projected Image Division and two stars each in Small Color Prints, Photo Travel and Photo Journalism. The Northern Georgia (NORGA) Small Print Circuit held last July was especially productive for me: in six judgments in Nature, Color Prints Open, PJ Open and Photo Travel Open and Theme, I received a gold medal, 2 silver medals, 21 Honorable Mentions and 52 additional acceptances. Of 20 prints I submitted, 4 had no rejections in any of the 6 judgments, and the top scoring one, "Seeing Eye Dog," received a Gold and a Silver Medal and 4 Honorable Mentions in the Photo Travel Theme Section "The Door."

Even though I don't do as well in many of the exhibitions I enter (far from it – in the Royal Photographic Society Exhibition in July none of my 4 images were accepted), competing in these international events is very rewarding, and I recommend it to all DPS members.

If you have specific questions or need help in getting started, send me an email at tetauber@comcast.net.

P.S.: I have recently accepted the responsibility to direct the study groups for the PSA Travel Photography Division. We already have two active study groups, and I expect that we will grow further. If you are interested in improving your travel photography and want to join or are looking for more information, send me an email.

TOM TAUBER, tetauber@comcast.net

>> PSA Inter-Club Creative Competition

Upon the completion of the Photographic Society of America's Inter-Club Creative Competition, the PSA holds a "Best of the Best" judging from the submitted images. This year, more than 500 individual entries were received. DPS member **MARVIN GERSTEIN** was awarded a Silver Medal for his photograph *"Through The Looking Glass."*

A slide show of the winning photographs can be seen at:
<http://psa-photo.org/divisions/cpid/creative-interclub/2010-11-bob/>



Hey Marvin, who's the fairest of them all!

>> PSA Creative Competition 2011 Results & New Coordinator Trish Vierling

The Delaware Photographic Society has placed second in the PSA Inter-Club Creative Competition for 2011 – out of first place by only 2 points! Twenty-seven photography clubs participated in this international event and submitted selected members' photos in four rounds of competition from December 2010 through June, 2011. Entries were limited to "altered reality" photographs. A big "thank you" to all of the members who submitted their fine creative photographs to make this second place possible.

Winning results can be seen at: www.mdsg.us/cic/ Look for DPS's results in the "Group A" column.

Special Note: I have been the Delaware Photographic Society's coordinator for the PSA Inter-Club Creative competition for the past three years. **Trish Vierling** has graciously volunteered to assume this position starting with

the 2012 season. With your help, and Trish's good work, we can once again achieve first-place as we did in 2009.

Submissions for the first of four rounds will take place towards the end of November. In the very near future Trish will provide you with her contact information. In the meantime, please start cataloging and preparing your excellent altered reality photos.

Thank you for your support over the past three years. It has been an enjoyable experience, and I know that club members will make every effort to provide Trish with their top-flight altered reality photographs as you have done for me.

MARVIN GERSTEIN, Vice President

>> New Nature Inter-Club Representative

Dave Osberg is DPS's new Nature Inter-Club representative. He joins Karl Leck who handles PJ and Trish Vierling who handles Creative, the two other PSA inter-club competitions in which DPS participates. Members should send their successful nature images, sized for projection, to osbergdk@gmail.com. Eligible images cannot show the

hand of man (no evidence of humans), or domesticated plants or animals, and cannot be manipulated, although PhotoShop optimization is OK if the result looks natural. Dave will need the first images by early October.

LYNN MANISCALCO, Awards Committee

>> Instruction Night, October 3

IF IT MOVES - SHOOT IT!

For the first Instruction Night of the year on October 3, our own Karl Leck will discuss his favorite photographic subject, capturing motion. From the extremely brief exposure that stops motion the human eye cannot discern to very long exposure yielding artistic effects, Karl will show examples. Each example will be explained so that members can use the techniques when photographing the assigned

subjects of "Land Vehicles in Motion" (November 2011) and "Waterfalls" (April 2012). In addition to the basic techniques, several variations will also be discussed. Join fellow DPS members and guests for an interesting evening beyond the 'still life'.

KARL LECK, *Print Director*

>> Guest Speaker, Steve Gottlieb, October 31

Steve Gottlieb will present his new program, entitled *25 Pictures/25 Stories*, on Monday, October 31, 2011, in the Cokesbury Auditorium. When we were kids, stories in our favorite picture books magically transported us to wonderful places and taught us important life lessons. With *25 Pictures/25 Stories*, Steve Gottlieb resurrects this children's art and transforms it for adult audiences. His true stories and vibrant photographs have been gathered from a lifetime of travels through all fifty states and abroad... and from his own neighborhood. While the stories are autobiographical, the insights, poignancy, humanity and humor they contain are universal.

Steve Gottlieb is a graduate of Columbia University College and Law School. He practiced law for many years before making a mid-life career shift to become a professional photographer. In 2005, Steve established and teaches at Horizon Photography Workshops (Chesapeake City, MD), which *American Photo* magazine recognized as one of the "12 Outstanding Travel Workshops in the United States." www.horizonworkshops.com

Dinner with Speaker is at 6pm in the Cokesbury main dining room. Advance reservations are required at \$17.50. **To RSVP, contact Eileen Furlong at 302.764.6922 or efurlong@comcast.net**

>> Photoshop Elements Classes

Photoshop Elements instructional sessions in the Cokesbury Community Room, Level A, are held on the second and fourth Thursdays of the month through November 10, from 7:30 to 9 pm. For additional information, contact Jim Smigie at jpsmigie@gmail.com

>> Assigned Subjects 2011-2012

The 2011-2012 Assigned Subjects are provided below. However, please remember that Assigned Subject entries must have been made within one year of the contest date.

October 2011 – Selective Focus
 November 2011 – Land Vehicles in Motion
 January 2012 – From Above
 February 2012 – Interiors
 March 2012 – Bridges
 April 2012 – Waterfalls

>> Tech Request

We've had several requests for anyone interested in sharing their technical expertise with DPS members. Information will be posted in The Reflector. Please notify me if you would like to create a "Tech Note" column or individual articles in our monthly newsletter. Subjects can be anything photography related that will help fellow members.

Now accepting articles/images for The Reflector November issue. Please forward all information/images to tmyanick@comcast.net **Deadline October 10, 2011**

THERESA YANICK, *Reflector Editor*



A Full Service
Photographic Store



James F. Cycyk
President

4101 North Market St. Wilmington, DE 19802 (302) 764-9400 Fax: (302)764-9402	165 East Main St. Newark, DE 19711 (302) 453-9400 Fax: (302) 453-9575
---	--

www.camersetc.net



May 2011 Fieldtrip, Wilmington Grand Prix

"Around The Bend" by STEVE SIEJA

>> WIEP Judges Banquet Reservations

WILMINGTON INTERNATIONAL EXHIBITION OF PHOTOGRAPHY JUDGES' BANQUET
January 28, 2012; 6:30 pm, Cocktails, Cash Bar; 7:15 pm, Sit-down Dinner
Hartefeld Country Club, One Hartefeld Drive, Avondale, PA 19311

First Course: Spinach Salad with fresh strawberries, almonds & honey mustard vinaigrette;

Main Course: Chef's choice of starch & vegetable, fresh baked rolls & butter and Entrée selections:

1. Chicken Hartefeld (roasted red peppers, spinach and fresh mozzarella with a tomato blush sauce).
2. Exotic Mushroom Ravioli (vegetarian selection; porcini, portobello, shiitake and ricotta cheese filling).
3. Orange Glazed Salmon (fresh Atlantic salmon with mandarin orange glaze).

Dessert: Strawberry Wave Cheesecake; Coffee or Tea

Number of People Attending _____ Check or Cash Amount: _____

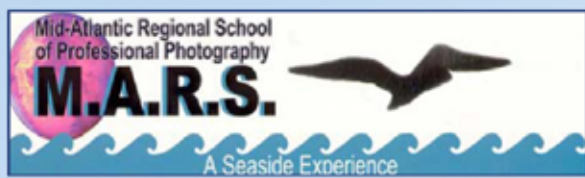
Name: _____ Entrée Choice: _____

Name: _____ Entrée Choice: _____

The cost is \$35 per person. Make checks out to Delaware Photographic Society, and send to Eileen Furlong, 1406 Shipley Road, Wilmington, DE 19803

If you have any questions, please call Eileen at 302-540-6238 or email at efurlong@comcast.net

Deadline: January 24, 2012



888-267-MARS (6277)
www.marsschool.com

Scholarship deadlines are approaching for those in particular need. Please call and ask about these assistantships and attend for less.

Join us for our 16th Annual Photographic Workshop
 beginning on Sunday, May 6th through Friday, May 11, 2012

A variety of courses are available: from natural light portraiture to creative outdoor imagery to photo shop work. Come to Victorian Cape May in the Springtime to hear the birds sing and the ocean waves roll up on the beach across the street from your hotel room window. Studying in Cape May is an exciting experience!

>> **Reminder, Membership Dues**

Just a friendly reminder, DPS membership fees for the 2011-2012 season are past due. You may renew your membership on our website at: www.delawarephotographicsociety.org or mail a check to **DPS Treasurer, Dick Greenwood, 301 Lawnfield Place, Kennett Square, PA 19348.**

>> **Offer Ends Soon!**



For orders placed by DPS members, American Frame Co. rebates 5 % of all framing materials back to the Society. Members have done business with AFC for over 25 years and rate their quality, selection, pricing and service as consistently excellent. Go to www.Americanframe.com or call **800. 537.0944** to request a catalog. Please provide reference number **P 163** when ordering so the Society will receive credit for the purchase and be awarded the rebate. Offer valid through 12/2011.