



The Reflector



www.delawarephotographicsociety.org • Delaware Photographic Society
PSA Award-Winning Publication

November 2006

President's Message

Some years ago, I agreed to become the custodian of the Photo Equipment Trust. I'll readily admit to having done a poor job in comparison to the previous chair, Bill Drennen, in at least one aspect: maintaining and publishing an inventory. Bill was a very organized man, had each piece numbered and cataloged, and published a list made available to members.

The Photo Equipment Trust has been generally underutilized, even when there was a current list of its contents. The idea was to have equipment made available for loan to members. We have received

equipment donations over the years, especially from the surviving spouse of former members. This source, by its nature, ensures that the equipment was virtually never state-of-the-art. In this era of rapidly developing technology, much of the contents of the Trust is obsolete. However, some of the things can still be quite useful for certain applications, or are actually still important accessories.

Over time, and with authorization of the board of directors, I've discarded some of the junk, and donated items to other organizations and individuals, but still have a collection of items. Equipment

donations continue to come in, and it is beyond my ability to catalog them this point. The best that I can do under current circumstances is to make the existence of the Equipment Trust known, and invite our members to examine it

(Continued on page 9)

November Speaker – Jim Graham

On **November 27** at **7:30 p.m.** **Jim Graham**, one of the Brandywine Valley's most accomplished photographers, will present his magnificent images in the Cokesbury Auditorium. Jim, an editorial and corporate photographer, was formerly on staff with the *Wilmington News Journal*. He was named Southern Photographer of the Year, placed second in the Gannett Chain

in Color Photography, won the Society of Professional Journalist's Best News Photograph of the Year Award, and was nominated for the Pulitzer Prize. To view more of



*The ceiling at the Cluny Museum, Paris, France
by Jim Graham*

Jim's beautiful photographs, go to www.jimgrahamphotography.com. If possible, join us at 6 p.m. for dinner with the speaker in a private Cokesbury dining room.

Coming Events

• **November 6**

7:30 pm Instruction Night (pg. 3)

Digital contest entry deadline

• **November 13**

7:30 pm Slide/digital Competitions

• **November 18**

2 pm DVCCC Ray O'Day Competition
Maple Shade NJ (pg. 7)

• **November 20**

7:30 p.m. Print Competition

• **November 27**

6 pm Dinner with speaker,
Jim Graham

7:30 p.m. Program
Cokesbury Auditorium

Reservations should be made in advance to Bob Coffey at 610. 388.2741 or bobcoffey@aol.com. Sorry, no walk-ins. Dinner cost is \$15, all inclusive; check payable to DPS. Limit 30.

**DELAWARE PHOTOGRAPHIC SOCIETY
2006-2007**

President — Jeff Smith

302.368.1089 / jasmix@comcast.net

First Vice President — Bob Hunt

302.764.1363 / makingcopy@aol.com

Second Vice President — Joe Bernofsky

302.478.4752 / Joebernofsky@comcast.net

Recording Secretary

Eleanor Blankenbaker

610.388.1305 / johblank@pipeline.com

Treasurer/Corp. Secretary

John Blankenbaker

610.388.1305 / johblank@pipeline.com

Education Director — Karl Leck

610.388.0298 / usesa@earthlink.net

Slide Director — June McKenney

302.368.2332 / bigstuart31@aol.com

Print Director — Ray Magnani

302.738.6953 / magnani@comcast.net

Program Director — Bob Coffey

610.388.2741 / Bobcoffey@aol.com

Reflector Editor — Sharon Coffey

610.388.2741 / SESCoffey@aol.com

Membership — Eileen Furlong

302.764.6922 / efurlong@comcast.net

Field Trips — Tom Oathout

302.836.0148 / delawarefoto@yahoo.com

Awards Committee Chair — Gus Costis

302.798.8195 / gtcostis@comcast.net

Equipment Chair — Bob McKenney

302.368.2332 / bigstuart31@aol.com

DVCCC Representative

Lynn Maniscalco

302.478.6423 / ltmphoto@juno.com

Publicity Chair — John Hamilton

302.479.0222 / deljohn@aol.com

Digital Competition — Bill Ritchie

302.239.1282 / ritchie.bill@gmail.com

DPS Webmaster — Mark Reed

302.655.1439 / mark4reed@comcast.net

www.delawarephotographicsociety.org

The Delaware Camera Club (DCC) was established January 28, 1931. DCC is a charter member of the Photographic Society of America and The Delaware Valley Council of Camera Clubs. In 2002 the name was changed to the Delaware Photographic Society (DPS) and the Society became a tax deductible educational organization.

74th WIEP Fast Approaching

It's not too early to start thinking about the 74th Wilmington International Exhibition of Photography (WIEP). This year, as usual, we can use all the help we can get. The plan is to have every chairperson have an understudy. Last year our newest chairpersons, Bill Ritchie (computer) and Mike Elliott (Slide), did a great job, and we encourage newer members to join the team this year.

The first need is for hosts for the out-of-town judges. Their job is to provide lodging for one judge and possibly a spouse, usually for Friday and Saturday nights. We also need someone, perhaps a team, to host the judges' reception on Friday night.

Later this month we will have an organizational meeting — place, day, and time to be determined. We will set up the organizational responsibilities and name the chair people. Ken Williams and John Hamilton are already at work selling advertising for the catalog. If you wish to advertise or know of a

potential advertiser, contact John at deljohn@aol.com or Ken at KRWILLIAMS1922@yahoo.com.

The WIEP is the DPS's largest annual event and it is lots of work AND fun for the team. Entry preparation begins Wednesday, January 3, and continues until judging week, January 24. Entries are returned through mid March. We work half days Wednesdays and Saturdays — perfect attendance is not required. As important as the work is, an added advantage is the opportunity to see all of the print and slide entries, not just the winners.

This year there will be a few changes in the competition and presentation that will be detailed in a later newsletter. Entry forms are available on the Web site and at DPS meetings.

If you have any questions, or wish to volunteer, see me on print or slide/digital nights or e-mail me at wiep74@aol.com.

Bob Hunt, 74th WIEP Chairman

Space Available???

For over 10 years, Irv Klair has provided a portion of his basement for the processing of WIEP slide and print entries. Irv is now selling his property and after the 74th exhibit, we will no longer have the use of his home. Therefore, we are looking for a member to volunteer basement space for WIEP processing on Wednesday and Saturday mornings beginning January 2, 2008. The processing procedure consists of cataloging and sorting entries in January prior to

judging day, repacking unaccepted entries for a few days in February, and repacking accepted entries after the exhibit ends in late February.

Providing this space is an extremely important contribution to the success of the WIEP. Our workers are conscientious, non-disruptive, and enjoy the WIEP experience. If you think you might be able to provide space, please contact WIEP Chairman, Bob Hunt at wiep74@aol.com.

Instruction Night

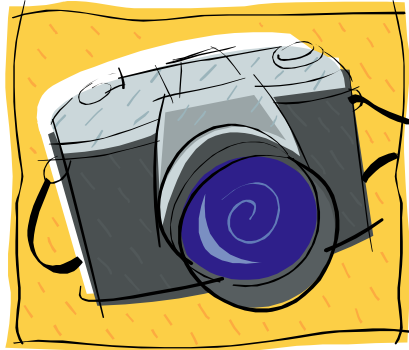
Instruction Night sessions are generally held the first Monday of the month and are free to DPS members. Please refer to the DPS calendar for schedule changes. For more information, contact Education Director, Karl Leck at usesa@earthlink or 610.388.0298.

• November 6: *Getting the Maximum from your Digital Camera* – DPS Experts

The November 6 Instruction Night will be a workshop to help us get better results from our digital cameras. Club members who have been working successfully in digital photography are encouraged to attend to share their knowledge. Camera store people are also being invited.

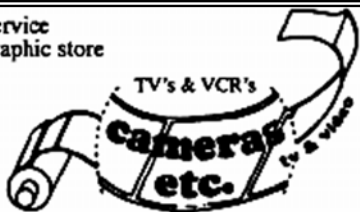
If you have questions, concerns, problems, or ideas on how to use your digital camera, regardless of how simple or high tech, speak up on November 6. Want to understand white balance better? Do you know when you should shoot Raw and when it really doesn't matter? How can you conserve battery life? Bring your camera and its instruction book and get answers from the

synergistic group. If we don't know the answer, we will try to figure it out or get an answer.



- December 4: *Shutter Speed, Aperture, and Focus* – Karl Leck
- January 8: *Print Mounting and How To Enter Competitions* – Karl Leck
- February 26: *Flash Photography Outside the Studio* – Bob Coffey, Bob Hunt and The Flashers
- March 5: *More Photoshop Techniques* – Karl Leck, Jane Strobach, and Friends
- April 2: *Digital Image Workflow: When To Do What*
- April 23: *You Be the Judge* – Jane Strobach, Karl Leck
- May 7: *5 Photographers Discuss their 5 Favorite Images Each* – The High Five

a full service
photographic store

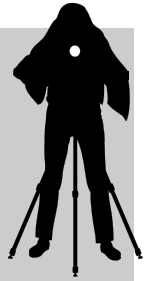


James F. Cycyk - President

4101 North Market St. Wilmington, DE 19802 (302) 764-9400 (302) 764-9402 Fax	165 East Main St. Newark, DE 19711 (302) 453-9400 Fax (302) 453-9575
---	---

Please
support
our
sponsor.

Vignettes



- Instruction Night is held the first Monday of the month at 7:30p.m.
- Competition nights are held on the second and third Mondays starting at 7:30 p.m.
- Program night is the last Monday of the month, 7:30 p.m.
- Location: Cokesbury Village, DuPont Pavilion, 726 Loveville Road, Hockessin, DE 19707.
- Membership dues should be addressed to: DPS Treasurer, John Blankenbaker, P.O. Box 120, Chadds Ford, PA 19317. Dues are \$35 for individuals, \$25 for others at the same address, and half the individual for junior or nonresident members. The dues for first-year members are \$20 per person.
- *The Reflector* is published by the Delaware Photographic Society, September through June and printed by Academy Printing, Wilmington, Delaware. No material may be reproduced without written permission. Contribution deadline is the third Monday of the month. Send announcements and/or articles to Sharon Coffey, 48 Partridge Lane, Kennett Square, PA 19348, 610.388.2741 or SESCoffey@aol.com.
- Visit our Web site at:
www.delawarephotographicsociety.org

Questions & Answers



Contributed monthly by Erik Kissa

For more information on photographic equipment and techniques visit me at:
www.psa-newmember.org/consultation_services/equipment.html

Q: *Are lenses made by independent manufacturers inferior to the main brand lenses?*

A: Not necessarily, some lenses made by independent manufacturers have better optics or more features than some main brand lenses. In other words, the camera manufacturers make high quality lenses for professional use and lower priced lenses of a satisfactory quality for the consumer market. The quality of the lenses made by the independent manufacturers also depends on the intended use of the lens. As an example, the Sigma 70-300mm APO lens is optically superior to the corresponding lower priced lens without the APO optics.

When new camera models arrive, the independent manufacturers may not be ready for the changes affecting the function of the lens but will upgrade an old lens, if possible. As an example, a 170-500mm Sigma lens used on the Canon EOS-3 film camera was compatible with the Canon 20D digital camera only at the maximum aperture of f/5.6. Sigma

upgraded the lens for a charge of only \$10.

Q: *How do you protect a lens on the camera?*

A: A lens on a camera must be protected against a blow to the lens, scratches of the front element, and the damage by water, sand, or dust. The front end of the lens can be protected against a blow by using a rubber lens hood. Unlike a metal hood, a rubber lens hood can absorb a bump. A rubber lens hood has another advantage as well. A polarizing filter can be conveniently adjusted by rotating the lens hood screwed into the filter. Most metal lens hood require the rotation of the filter inside the hood which is cumbersome and may leave fingerprints on the filter.

The protection of the front element against scratches by attaching a UV filter has been controversial. Theoretically, the filter introduces two glass-to-air surfaces and increases reflections and flare. With a multicoated filter the effect is insignificant for

practical purposes. Purists can resolve this argument by testing the lens with and without the filter. When a polarizing filter is used outdoors most of the time, the debate is meaningless anyhow.

The lens can be protected against water with various sleeves and bags designed to cover the lens and the camera (Ewa-Marine, Kata, Lightware, OP/Tech, and Tenba) or with an umbrella (Probrella). The devices that shield the lens against water, protect the lens against sand and dust as well.

Q: *I am planning to buy the new Nikon 105mm VR (vibration reduction) macro lens. Is the stabilization of a macro lens useful?*

A: No, macro photography does not need an optical stabilization of the lens. The optical image stabilization, called vibration reduction by Nikon, shifts elements of the lens to compensate for the camera movement. In macro photography (a reproduction ratio larger than one) or close-up photography (a reproduction ratio larger than 1:4) the main sharpness problem is the extremely shallow depth-of-field. This has two consequences. Firstly, it is very difficult to focus a handheld camera accurately. The camera has to be mounted on a tripod and focused by moving the camera back and forth, usually with a focusing rail. Secondly, the narrow depth-of-field necessitates a small aperture.

(Continued on page 5)

Questions & Answers

(continued from page 4)

At very small apertures the exposure times are too long for hand held shooting. With the ISO value at 400 in bright light, the exposure times may be short enough to attempt handheld photography with vibration reduction. However, the stabilization of the lens does not reduce the unsharpness caused by the movement of an insect or the wind-driven drift of a flower. The movement of the subject is stopped with an electronic flash. The short exposure time of the electronic flash eliminates the loss of sharpness caused by the vibration of the camera as well. The close-up photography of insects is usually done with an electronic flash to eliminate blur and to have enough light for shooting with a small aperture.

One disadvantage of the optical stabilization is the higher cost of the VR lens: almost \$200 higher than the corresponding Nikon AF lens and about twice the price of a very good lens of independent manufacturers, Sigma, Tamron, and Tokina.

The Nikon macro VR lens, called the Micro Nikkor, is heavier than the other macro lenses (focal length, weight and filter size):

Micro Nikkor VR 105mm, 1.6 lb, 62mm

Micro Nikkor AF 105mm, 1.2 lb, 52mm

Sigma 105mm, 15.1 oz., 58mm,

Tamron 90mm, 14.3 oz., 55mm

Tokina Pro D 105mm, 1.2 lb, 55mm

The Nikon VR 105mm lens is a high quality lens with virtually no

distortion (0.03%). The slightly higher (0.3%) distortion of the very sharp Tokina macro lens is insignificant in most applications.

The high cost of optical vibration reduction may be justifiable when the lens is used for general photography (a reproduction ratio smaller than 1:4) and portraiture as well. For true macro and close-up photography, an optical stabilization of the lens is seldom needed.

Q: *Contamination of a digital SLR camera with dust is unavoidable. What is being done to facilitate dust removal?*

A: Dust on the sensor is a common problem of digital SLR cameras. Dust particles come from moving parts in the interior of the camera, from the body cap, or are introduced during the lens change. The sensor is charged and attracts dust particles. The seriousness of the dust problem has been recognized by the manufacturers and several techniques have been developed to remove dust:

(a). A colorless filter below the lens mount has been used to prevent dust from entering the camera, to throw dust particles out of focus, and to make it easier to remove dust (Sigma).

(b). Several cameras (Olympus, Panasonic, Sony, and now the Canon EOS 400D) have an active protection system. The dust collects on the low-pass filter in front of the sensor and not on the sensor itself. The low-pass filter vibrates at a high frequency to shake off dust every time when the

camera is turned on or off. An anti-static coating on the low-pass filter reduces the adhesion of dust particles.

(c). A passive dust prevention technique uses a reference photograph of a featureless white surface to map dust and remove the effects of dust by software (Canon, Nikon).

If the camera does not have a dust removal feature, the sensor must be cleaned. The sensor can be cleaned by the manufacturer of the camera, a repair shop, or the photographer. The low-pass filter in front of the sensor is delicate and can be easily damaged. Numerous brushes and cleaning devices for cleaning the sensor are on the market, some are more effective and expensive than others. The dust removal requires lifting of the mirror with the camera in the Cleaning Mode. To make sure that the mirror does not close inadvertently when removing dust particles, the camera should have a fully charged battery or be connected to a power supply.

Because dust is not on the sensor but on the filter in front of the sensor, dust particles are not always visible in the photograph. When the aperture of the lens is large, the dust particle on the low-pass filter is out of focus and does not interfere with the image. This is similar to shooting animals in the cage. A large aperture reduces the depth-of-field and when the camera is close to the cage, the bars of the cage are out of focus and invisible. The spotless region of the camera depends on the aperture and the focal length.

(Continued on page 6)

Q & A

(Continued from page 5)

When using a large aperture, dust may not be noticeable. However, to make dust visible for cleaning purposes, a white sheet or the sky should be photographed using a small aperture.

At the present time Nikon is the only major DSLR manufacturer without an active dust removal system. This is interesting because the CCD sensor in Nikon DSLR cameras is made by Sony. The Alpha A100 DSLR made by Sony has a 10.2 MP CCD sensor with a vibration mechanism for dust removal. For some reason, this dust removal technique is not available in the Nikon D80 or D200 (The Nikon D2Xs has a CMOS sensor. Popular Photography, August 2006, page 84, states incorrectly that the sensor is a CCD). It is probable that all future DSLR cameras, including the Nikons, will have active dust removal. ☺

Send questions to ekissa@aol.com

FOR SALE
Nikon F2 35mm
camera with
Nikon lenses.
28mm, 50mm and
80-200mm zoom,
6 Nikon Filters,
Nikon Ext Rings,
Nikon Flash, Nikon
leather case.
All for \$650.00
Contact Don Wood
302.529.9495
d.don@verizon.net

Delaware Images Requested

By Herb Sargeant
 PNC Calendar Representative

DPS has a contract with the PNC Bank to provide images for the calendar they give their business customers. The bank pays \$135 for each image, plus \$200 for the image used as the calendar cover. Each year in June, DPS submits images for their selection; nineteen DPS members submitted nearly a thousand images for the 2007 calendar.

Photographs taken in all areas of Delaware are requested, from all three counties, and during all seasons of the year, in all types of weather. Images must be exposed in a horizontal (landscape) format. They may be of any subject, but attractive scenes are usually selected. Photos of a specific religious group should not be submitted. If recognizable persons are shown, a photo release must be included with your submission.

Images may be made as slides (submit in plastic sheets), prints (5x7 or 8x12) or digitally (digital images submitted as prints). Each photo should include the maker's name and the location shown.

Any number of images may be submitted, from half a dozen to a couple of hundred. Photos that were previously submitted, but not selected, can be resubmitted. Keep a detailed list of your submissions; if your digital image is selected, PNC will request that you submit a high resolution disk with the image. Submissions will be returned to the maker in December.

Every member that submits images will be given a copy of the calendar.

Start now, and continue taking your photos throughout the year. Please contact Herb G. Sargeant at hmsargeant@msn.com or 302.731.4069 if you have questions.

2007 PNC Calendar Acceptances

The PNC Bank has made their selections for the 2007 calendar.

Cover	<i>Hoopes Reservoir</i>	<i>John Hamilton</i>
January	<i>Winter Sunset</i>	<i>June McKenney</i>
February	<i>Rockwood Mansion</i>	<i>Erik Kissa</i>
March	<i>Kite Day</i>	<i>Joanne Moretti</i>
April	<i>Amish Farmland</i>	<i>Erik Kissa</i>
May	<i>Lewis Canal</i>	<i>Erik Kissa</i>
June	<i>Red Wing Blackbird</i>	<i>Bob Coffey</i>
July	<i>Old New Castle</i>	<i>Erik Kissa</i>
August	<i>Egret</i>	<i>Marvin Gerstein</i>
September	<i>Grand Opera House</i>	<i>Patsy Costis</i>
October	<i>Hoopes Reservoir</i>	<i>John Hamilton</i>
November	<i>Dunes at Cape Henlopen</i>	<i>John Hamilton</i>
December	<i>Yuletide/W & W RR</i>	<i>Joanne Moretti</i>

75th Anniversary Celebration

DPS celebrated its 75th anniversary on September 25, 2006 with nearly 100 members, former members, and guests in attendance.

View more anniversary photos on our Web site by going to www.delawarephotographicsociety.org.



◀ Ray Firmani donated part of his antique camera collection for table decorations. At the end of the evening, these cameras were offered for sale as a fundraiser.



▲ Award-winning prints and antique camera display



➤ Decisions, decisions. Marty Reed and Michael Elliott in the buffet line.



▲ Ray Firmani and John Hamilton browse through the commemorative booklet.

▼ Steven Sieja, Rob Tuttle, Marsha Hook, and Michael Elliott.



Photos by Bob Coffey



Pick up your free copy of the 75th anniversary commemorative booklet and patch at a Society meeting. Extra copies may be purchased for \$2 each.

October Digital Results

ALTERED REALITY

Class A

Blake, D	<i>Moon Crossing</i>	21 *
Strobach, J	<i>Fractured fruit</i>	20 *
Leck, K	<i>Wet Dream</i>	18
Hamilton, J	<i>Buzzard</i>	18
Hutton, D	<i>Solarized Water Lily</i>	17

Class B

Ritchie, B	<i>Porch Steps</i>	23 *
Costis, G	<i>Joyous Occasion</i>	18 *
Stambaugh, P	<i>Pollen</i>	17
Costis, P	<i>Lady of the</i>	17

ASSIGNED

Class A

Leck, K	<i>Golden Temple</i>	22 *
	<i>Eat at Joes</i>	22 *
Hutton, D	<i>Ferris Wheel #1</i>	21 *
Strobach, J	<i>Alien Nightscape</i>	21 *
Gerstein, M	<i>Night Works</i>	21 *
Hamilton, J	<i>Longwood</i>	20
Hutton, D	<i>Spinning Ride</i>	18
Blake, D	<i>Reflection of Mary</i>	17
Hamilton, J	<i>Diner#2</i>	15
Strobach, J	<i>The Zipper</i>	14

Class B

Tauber, T	<i>Evening Courtyard</i>	24 *
Eichner, G	<i>Early Morning</i>	23 *
Clark, S	<i>Nafplion at Nite</i>	22 *
Donor, D	<i>Green Mile Bridge</i>	21 *
Tauber, T	<i>Church in Sucre,</i>	21 *
Clark, S	<i>Taverna In Tinos</i>	17 *
Costis, G	<i>Opera House</i>	17 *
Donor, D	<i>Flowering</i>	15 *
Eichner, G	<i>Rockettes Under...</i>	15 *
Reed, D	<i>Original Frozen</i>	15 *
Ritchie, B	<i>Dolle's on the...</i>	14 *
Moretti, J	<i>Vegas Night</i>	14 *
Costis, P	<i>Night Watchman</i>	13
	<i>Happy Little</i>	13

Ritchie, B	<i>Penns Landing</i>	13
Reed, M	<i>Pumping Station at</i>	12
McKenney, J	<i>Las Vegas Strip</i>	12
Reed, M	<i>Brewery After Dark</i>	11
Toutkaldjian, J	<i>Moon Grass</i>	11
Reed, D	<i>Green Crane</i>	10
Costis, G	<i>Bronze Statue</i>	10
Moretti, J	<i>Christmas Village</i>	10
Toutkaldjian, J	<i>Boom</i>	9
McKenney, J	<i>Blue Moon</i>	7

OPEN

Class A

Strobach, J	<i>Monk in red</i>	27 *
Leck, K	<i>The Rag Turban</i>	26 *
	<i>Tabu Palace Taxi</i>	24 *
Gerstein, M	<i>Summer Cruise #2</i>	22 *
Blake, D	<i>Stairs</i>	21 *
Hamilton, J	<i>Silver Lake</i>	20 *
	<i>Kansas</i>	19
Gerstein, M	<i>The Eyes Have It</i>	19
Strobach, J	<i>Headlights</i>	18



RR Track in Autumn by John Toutkaldjian

Hutton, D	<i>Watkin's Glen #2</i>	18
	<i>Hula Girl #1</i>	18
Blake, D	<i>Holy Snow</i>	16

Class B

Toutkaldjian, J	<i>RR Track in Autumn</i>	27 *
Donor, D	<i>A plant, no pot of ...</i>	23 *
	<i>Duck on the Falls</i>	23 *
Clark, S	<i>Monarch</i>	23 *
Tauber, T	<i>Houseboat</i>	23 *
Costis, P	<i>Night Time in the...</i>	22 *
Eichner, G	<i>Mount St. Helens</i>	22 *
Reed, D	<i>Cacti</i>	21 *
Ritchie, B	<i>Leipsic Crab Boats</i>	20 *
Costis, G	<i>Poseidon's Moon</i>	20 *
Stambaugh, P	<i>Yellow Daisy</i>	19 *
	<i>Beginning & End</i>	19 *
Toutkaldjian, J	<i>Pumpkins</i>	19 *
McKenney, J	<i>Inspection</i>	18
Reed, M	<i>Harmony</i>	18
Moretti, J	<i>Smoky Canyon</i>	18
	<i>Jumper</i>	17
Clark, S	<i>Spring Flowers at ...</i>	17
Costis, P	<i>Could She Be a ...</i>	16
Costis, G	<i>Gateway to the Taj</i>	16
Eichner, G	<i>Stormy Oregon</i>	16
Tauber, T	<i>Man with Beard</i>	15
Ritchie, B	<i>Leipsic Boats #2</i>	14
McKenney, J	<i>Bailing</i>	13
Reed, M	<i>Barn Skeleton</i>	12
Reed, D	<i>Frozen in Time</i>	10

* Images eligible for digital-image-of-the-year.

Corrections...contact Bill Ritchie at ritchie.bill@gmail.com.

**November 6 –
Next digital entry deadline.**

Share Your Talent

If you have a program you are willing to present to another camera club in our area, send the title and length, fee required, if any, and your contact information

to Lynn at ltmphoto@juno.com. Also, if you are an experienced judge who is willing to judge for other clubs, send a separate e-mail to the same address with contact

information, specialties if any, and number of years experience. The list of programs and judges will be available to other clubs who would make the arrangements directly.

Member News

• At the recent Prime Hook Nat. Wildlife Refuge Waterfowl Festival, **Nancy Everds** was awarded a 3rd place for *Bombay Sunrise with Geese* and a 1st place for *Reflective Frog* in the Wildlife category of the 3rd Annual Photography Contest. Nancy's *Reflective Frog* also took Best In Show!!! Over 300 photos were submitted in one of three categories, Delmarva Scenery (no human-made structures), Delmarva Wildlife, and Native Plants.



Reflective Frog © Nancy Everds



• PSA Baltimore Conference:
Congratulations to **Herb Sargeant**, **Karl Leck**, **Dianne Carnegie**, **Erik Kissa**, and **Lynn Maniscalco** for their acceptances in the print, slide, and stereo competitions.

PSA

The Photographic Society of America (PSA) is the largest organization of its kind in the world, bringing together amateur and professionals in all the varied fields of photography, including color slides, nature, pictorial prints, stereo (3D), electronic photography, video/motion pictures, photojournalism, travel photography, and devotees of every process in which the worldwide membership is interested.

Help from experts and educational programs is available to all members. Find out more about the PSA from these websites:

www.psaphoto.org and
delawarephotographicsociety.org.

Web Report

The member gallery area of the DPS website was recently redesigned to make it easier to present more images in an individual gallery and to facilitate more frequent updates. If you haven't already seen the new gallery design, please check it out. The main gallery page will present a random selection of images from each individual gallery each time you enter or refresh the page. Clicking on the thumbnail image for an individual name will take you to that member's gallery. There is also a slideshow feature that will automatically sequence through the set of images.

In the past there was a rule that attempted to limit the number of

images a member could maintain in a gallery. This is no longer the case – the new design actually looks better if you have 12 or more images. Contact Mark Reed if you want to start or update a gallery. The simplest way to start is to e-mail a set of jpeg files to Mark. Either name the files as you want the titles to appear or provide a separate list of titles. If you want to get fancier, you can provide additional descriptions of each image, or provide a self portrait and a biography. If you are more adventurous, Mark is also providing a program to DPS members that will allow you to create and test your gallery before submitting it.

Contact Mark at webmaster@delawarephotographicsociety.org

Presidents Message

(Continued from page 1)

at any mutually-convenient time we can arrange. For most items, I would even offer the items for sale at very reasonable prices or for loan, as the interested party prefers. If you're considering purchasing something that was in use prior to the digital camera era, or interested in investigating gadgets that might inspire a new direction, you might consider investigating the Photo Equipment Trust.

A reminder that the Ray O'Day interclub competition is Saturday, November 18 at 2 p.m. at the Maple Shade (NJ) Municipal Complex. Contact Lynn at 302.478.6423 or ltmphoto@juno.com to arrange carpools.

Jeff

Gibraltar Field Trip



On September 30, Field Trip Chair, Tom Oathout, organized an interesting field trip to historic Gibraltar Gardens – complete with four beautiful models, antique car, and motor cycle. Thirty DPS members took advantage of the opportunity to get together, take some memorable shots, ask questions, and enjoy the camaraderie.

Field trips are a great way to learn, as experienced members are always available and willing to lend assistance and offer advise. Joining a camera club is like being a member of a family and this is where we really get to know one another and have fun doing what we all love to do. Often, we can shoot some of the assigned subjects, such as tight shots of the reflections in the car’s highly polished surface for this month’s assigned subject, “Simplicity”. Tom will be scheduling another outing in the near future...so, come join in the fun.



Photos by Karl Leck



Needed...

When you replace your old laptop computer, please consider donating your old one to DPS. We are gradually replacing our ancient, unpredictable scoring systems with digital devices. Each new system requires a laptop computer with Windows XP. We need 4 additional laptops – 2 for the scoring devices to be purchased, 1 for the projector, and 1

for data processing. Why so many...during WIEP judging, three scoring systems are required at the same time, as well as 2 computers used for data processing.

The good news is that the DPS is a nonprofit educational organization and your donations are tax deductible. If you can help, contact Jeff at jasmix@comcast.net.