



The Reflector

Volume 63, Issue 4

December 2010/January 2011

Calendar:

- **Dec. 2, 9, 16**
7:30pm — Elements
Classes, pg.9
- **Dec. 6**
7:30pm Instruction
- **Dec. 13**
7:30pm —Holiday
Party
- **Jan. 3**
7:30pm—Instruction
- **Jan. 7**
Projected Image
entry deadline
- **Jan. 10**
7:30pm Projected
Image Competition
- **Jan. 14**
Print competition
entry deadline
- **Jan 17**
7:30pm—Print
Competition
- **Jan. 24**
7:30pm—Print
Critique by Steve
Gotlieb
- **Jan. 29**
8am-4pm— WIEP
judging
6:30pm— banquet
- **Jan. 31**
7:30pm — Guest
speaker Sammy
Somekh, Auditorium
Level C

My Thoughts

By Karl Leck
President

I judge a lot of competitions at smaller clubs than ours. Almost all of these clubs ask me to comment on many, and sometimes all, of the images. I welcome the opportunity because it's a way to point out aspects of the image that the maker may not have realized. I try to determine what the photographer is trying to communicate to the viewer. In our large club, comments are a luxury during regular competitions because we don't want the meeting to last too long. This year we have dedicated


(Continued on page 2)




*Yosemite Falls by Daniel DeMarco
November high-scoring projected image*


Annual Holiday Party

Join us for the annual DPS holiday party and print/gift exchange on December 13 at 7:30pm. Rather than the monthly competitions the evening will include:

 A Party — Everyone is asked to contribute a holiday favorite — such as cookies or cake, to be shared.

 A Print Exchange (optional)
Bring one of your mounted, gift-wrapped prints to exchange with

another member. Make it one of your best, as a member will become the proud owner of your artwork. The print does not have to be framed.

 A Gift Exchange (optional)

Everyone who would like to do so may exchange an inexpensive gift-wrapped photo-related object.

Guests are always welcome. For more information, contact Carole Clarke at cnclarke@aol.com or 610.358.5191.

President — Karl Leck

610.388.0298 / karleck@verizon.net

Vice President — Jeff Smith

302.368.1089 / jasmix@comcast.net

Recording Secretary

Dee Langevin — 302.376.7645
cnl001@verizon.net

Treasurer/Corp. Secretary

John Blankenbaker — 610.388.1305
John.Blankenbaker@verizon.net

Exhibition Chair

Dianne Carnegie — 410.398.2397
dicarnegie@msn.com

Education Director — Bob Coffey

610.388.2741 / Bobcoffey@aol.com

Projected Image Director

Pete Lounsbury — 302.636.0868
lounsburyus@comcast.net

Print Director — John Haedo

484.480.4430 john581@comcast.net

Program Director — John Hamilton

302.479.0222 / deljohn@aol.com

Reflector Editor — Sharon Coffey

610.388.2741 / SESCoffey@aol.com

Membership — Ruthann King

302.299.2665 / raking44@verizon.net

Field Trips

Steven Sieja — 302.540.9283

Awards Committee

Lynn Maniscalco — 302.478.6953
Ltmphoto@juno.com

Equipment Chair

Ed Ford — 919.610.9977
fordeh1964@gmail.com

Publicity Chair — Carole Clarke

610.358.5191 / cnclarke@aol.com

Judges Chair

Tom Tauber — 610.626.1579
tetauber@comcast.net

Standards Chair — Marvin Gerstein

302.475.5939 / marvtu@aol.com

DPS Webmaster

John Davis — webmaster@delawarephotographicsociety.org

The Delaware Camera Club (DCC) was established January 28, 1931. DCC is a charter member of the Photographic Society of America and The Delaware Valley Council of Camera Clubs. In 2002 the name was changed to the Delaware Photographic Society (DPS) and the Society became a tax deductible educational organization.

My Thoughts

(Continued from page 1)

two evenings to having a well-versed photographer comment on prints brought in by members. Jay Greene (November 22) and Steve Gottlieb (January 24) are excellent photographers who know how to express their thoughts about images. I hope you will attend these events to listen to their insightful comments. If you like, you are invited to bring a print or two which can be presented anonymously for their comment.

Monthly competition entries are fewer than last year. I attribute that mostly to the big change we made in how members enter competitions. There have been frustrating problems for some. Once these problems are solved and we get used to this new way of entering, the system is very slick and efficient. In order to use it you need to know your member logon name and password, and your member number (for print labels). If you are experiencing problems now, let me know at karleck@verizon.net. I want

everyone who wishes to compete to be able to do so in our new digital system. If the computer is your worst enemy, grab me at a meeting so we can discuss the situation and find a solution.

The Wilmington International is starting work soon. Watch for notices from Dianne Carnegie to lend a hand at our work apartment starting in January. You get to see incoming entries up close and may even hear members discuss some of them. I expect more images with incredible lighting from Asia and poignant photojournalism images from Iran. It's fun to see and learn. We help educate ourselves by studying the images received from over 30 countries.

Most of us celebrate at least one mid-winter holiday. I hope that yours is complete with interesting and loving family and friends. I also wish for accurate exposures, sublime lighting, and the serendipitous moment that comes so rarely. May your holiday images be meaningful and satisfying. ☺



A Full Service
Photographic Store

Cameras Etc.

James F. Cycyk
President

4101 North Market St.
Wilmington, DE 19802
(302) 764-9400
Fax. (302)764-9402

165 East Main St.
Newark, DE 19711
(302) 453-9400
Fax. (302) 453-9575

www.camersetc.net

Instruction Night

Instruction Night is held the first Monday of the month, October through May in the duPont Pavilion at 7:30pm

➤ December 6: *Photo Illustration with Photoshop — Layering and Compositing Images and Textures* by Tony Wood

Tony, a Philadelphia based photographer, specializes in location shooting for editorial, corporate and non-profits. His DPS instruction will cover blending layers, layer adjustments, levels, curves, hue saturation, free transform, liquefy, sharpening, masks, painting, selections... and the thinking and strategizing that goes into the images.

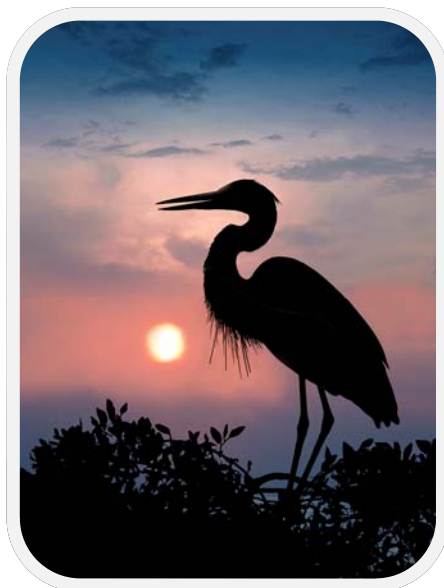
➤ January 3: *Bird Photography*, Contributing photographers: Rob Tuttle, Mike Elliott, and John Haedo

Objectives

- Briefly introduce the extensive topic of bird photography – birds as subjects, equipment, techniques
- Illustrate with image
- Encourage enjoyment of outdoors, nature, and birds
- Provide resources for further exploration

Tentative Outline

- Basics – lighting, background, attractive subject, cropping, sharpness, etc
- Bird Portraits
- Flight Shots
- Stories (Behavior), Birdscapes, Abstracts
- Illustrative Images



Blue Heron Sunset
by John Haedo
2010 Color Print-of-the-Year

- Equipment Display
- Questions

Sources: Personal Experience, Workshops, Magazines, Books

➤ January 24: *Print Critique* by Steve Gotlieb

Bring one of your problem prints for review and learn how it could be improved.

➤ February 7: *From Capture to Process*, Joseph Rossbach

➤ March 7: *Online Marketing*, Sandro Cuccia

➤ April 4: *Event Photography*, Bob Hunt and Pete Lounsbury

➤ May 2: *Why Use Lightroom?* Bob Coffey

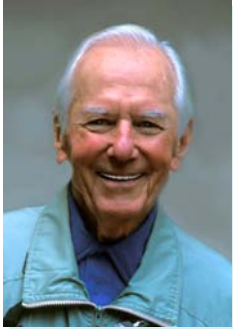
Thumbnails

- Instruction Night is held the first Monday of the month at 7:30pm.
- Competition nights are held on the second and third Mondays at 7:30pm.
- Program night is the last Monday of the month October—March at 7:30pm in the Cokesbury auditorium on Level C.
- Location: duPont Pavilion, Cokesbury Village, 726 Loveville Rd, Hockessin, DE 19707.
- Membership dues should be addressed to: DPS Treasurer, John Blankenbaker, P.O. Box 120, Chadds Ford, PA 19317. Dues: \$35, individuals; \$25, others at the same address; half the individual fee for junior or nonresident members; first-year members, \$20 per person.
- *The Reflector* is published by the Delaware Photographic Society. Material may not be reproduced without written permission. Please send articles or announcements to Sharon Coffey at SESCoffey@aol.com.
- Members are encouraged to participate in the Yahoo group, DPS-Exchange, DPS-Exchange@yahoo.com
- Visit our Web site at: www.delawarephotographicsociety.org.



This program is made possible, in part, by grants from the Delaware Division of the Arts, a state agency dedicated to nurturing and supporting the arts in Delaware, in partnership with the National Endowment for the Arts.

Questions & Answers



Contributed monthly by
Erik Kissa

For more information on photographic equipment and techniques visit www.psa-newmember.org.

Q: *When is the best time to photograph flowers in Longwood?*

A: In the spring, April is the best time for tulips. For water lilies, August or early September is the best time. In late summer, shadows are softer than in midsummer and,



if the days are cooler, the night flowering lilies will stay open longer in the morning. Water lily pictures made at the end of the season are interesting because they are different. I photographed a water lily on

October 29. The leaves have an unusual color and structure. (Nikon 28-200mm lens at f/16 and 1/160 at 200mm on D 90, ISO 250. No stabilizer, handheld).

Q: *I bought two Sigma lenses, the 18-50mm 2.8 and the 50-150mm f2.8 and*

would like to test them for sharpness, vignetting and distortion by photographing a newspaper on a wall. With the camera on a tripod and a flash I would photograph the paper at five different f/stops. I would use five stops and three different focal lengths, moving the camera so the field of view is the same. Is this a good method?

A: What you are planning to do is too much work for the information it will give you.

A real lens test requires several different specific procedures.

I used to test lenses by the National Bureau Standard procedures, but now I depend on the test data in photographic magazines and user experiences. I test a new lens only to make sure that the copy I have is as good as expected. The common faults of a new lens are decentering of optics, inaccurate focus, and malfunction of the diaphragm. The newspaper test will detect decentering, evident as unequal edge sharpness of the photograph. The camera must be absolutely level, when performing this test.

Focusing, with a camera at a 45 degree angle, on a line drawn on the paper indicates proper focus. One-third of the apparently sharp area will be in front of the line, two-thirds beyond. The test must be done carefully because the focusing system of modern cameras is complex and using a wrong focus point will give misleading information.

Photographing a uniform area, like the surface of a street, at different apertures will show how well the lens **and** the camera perform. Photographs of a brick wall at different f/stops will reveal distortion. But, the most important test is actual photography under different conditions.

Q: *Can Nikon lenses be used on Canon cameras?*

A: Yes, with an adapter. Some adapters are cheap but may not fit properly and can

(Continued on page 5)

Questions & Answers

(Continued from page 4)

break easily. An adapter made by Novoflex is of good quality but very expensive, about \$270. When using an adapter the automated features of the camera are lost. Focus is manual and the exposure is determined by the stop-down method.

Q: *What are the PSA distinctions and honors?*

A: There are four honors awarded for a combination of exemplary service to photography and great proficiency: Associate (APSA), Fellow (FPSA), Honored (HonPSA), and Honored Fellow (HonFPSA). The latter two are awarded very infrequently. Until this year, there were two distinctions based on exhibition success: Proficiency (PPSA) and Excellence EPSA, with higher requirements. Beginning this year there will be two additional designations: Master (MPSA) and Grand Master (GMPSA).

Q: *I am planning to purchase my first digital projector. I understand that relatively new on the market are projectors with a projection field which is 1024 x 1024 pixels, suitable for equal size horizontal and vertical images. Could you suggest any such models, preferably in the likely less-than \$1000 range?*

A: The prices of the excellent Canon Realis projectors start at \$2000. I could find only one projector with a resolution of at least 1024x1024 pixels and a price below \$1000. The Optoma HD20 has 1920x1080 resolution, 4000x1 contrast and a modest 1700 lumen brightness. The price is \$999 (Adorama) or \$934. (Amazon). A little more money can buy a better projector. The Epson PowerLite 8350 (replacing the Epson 8100) has a 1920x1080

resolution, a 50,000x1 contrast, 2000 lumens, and a more stable inorganic panel, for \$1289 (Amazon).

Q: *Do long focal length lenses have a narrower depth-of-field than short focal length lenses?*

A: This is true only if the f-number of the two lenses is the same. The depth-of-field (DOF) depends on the aperture (opening in the lens), the distance to the subject, and the circle of confusion, an arbitrary factor (see next question). The distance of the subject is calculated from the optical center of the lens.

A 50mm f/2.8 lens has a shallower depth-of-field than a 100mm f/8 lens because the 50mm lens at f2.8 has a larger aperture (opening) than the 100mm lens at f/8. The DOF of a 70-200mm f/2.8 lens decreases when increasing the focal length because the aperture is increasing to keep the f/2.8 stop number constant.

Q: *What is the circle of confusion?*

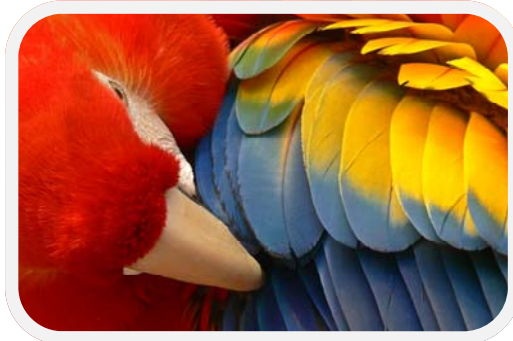
A: The circle of confusion is based on the observation that a circle appears as a point below a certain size. Light rays focused with a lens on a plane converge to a point when in exact focus. When the lens is out of focus light rays form a circle on a plane. If the circle is very small it appears as a point, although the light rays are not forming a point. The maximum size of the circle appearing as a point depends on the size of the film or sensor, because a smaller format film or sensor requires more magnification to make a print. The standard value for a 24x36mm camera is 0.03mm, and 0.02mm for the APS-C size sensor.

Erik Kissa

Send questions to ekissa@aol.com

Focus on Wilmington International Exhibition

Dianne Carnegie
WIEP Chair



Primary Colors
by Dee Langevin
DPS SilverMedal
77th WIEP

The Wilmington International Exhibition of Photography (WIEP) is the largest DPS project of the year, a true labor of love. It requires dozens of volunteers to process thousands of

print and digital image entries. Nine judges will arrive for a weekend of fast-paced judging, culminating with a banquet and display of award-winning imag-

es. One month later, the exhibit will be shown at Arsht Hall on the Wilmington Campus of the University of Delaware.

But first, in order to proceed, we need **volunteers**— the more help the better! Weekend or day **hosts** and **back-up hosts** are needed for the nine judges, and **drivers** are needed to make airport or train runs. Hosts have the advantage of spending some one-on-one time with judges and are invited to the pre-judging party. Please contact Eileen Furlong at efurlong@comcast.net to volunteer

to help with the judges.

Eager hands are needed for setting up the apartment at Greenville Place. The apartment number and precise directions will be announced as soon as possible via e-mailed and at meetings.

John Hamilton is again selling advertising space for the exhibition catalog. If you wish to advertise, or know of a potential advertiser, please contact John at 302.479.0222 or deljohn@aol.com.

WIEP patrons and sponsors play a key role in the continued success of the WIEP. The names of donors received by **February 10** will be listed in the 78th Salon catalog. A Patron's form is provided on page 7.

Check out the WIEP Web site at www.wiep-photo.org. Don't forget to enter your own images!

Processing begins on Saturday, January 8 at an apartment in Greenville. If you can help with any of these important tasks, please contact Dianne Carnegie at 410.398.2397 or dicarnegie@msn.com.

Judges' Lunch

Saturday, January 29, 2011 • Cokesbury Village

Please reserve _____ places at the buffet lunch. Enclosed is my check for \$10.50 per person.

Name(s)

Mail to Bob Hunt, 30 Cragmere Road, Wilmington, DE 19809 **Deadline: January 14**

Wilmington International Exhibition

Judging Day Meals

◆ A free continental breakfast will be provided for judges and volunteers at 8am on Level C.

◆ Lunch: Lunch will be available in the Cokesbury dining room at a cost of \$10.50 per person. The menu will be soup, California chicken salad with fruit and a croissant, chef's choice dessert, and coffee or tea. **Please note, the deadline to sign up for lunch is January 14.** Use the form provided on page 6 and return with your check to Bob Hunt.

Another option is to bring your own lunch.

◆ The Judges' Banquet will be held at the Delaware National Country Club, 400 Hercules Rd, Wilmington, DE 19808 on Saturday, January 29. The cash bar opens at 6:30 pm and the buffet dinner will be served at 7:15pm. Award winners will be announced and the judges will present examples of their own work. Guests are welcome. The reservation form and menu are provided below. Please RSVP by January 26.

Schedule

January 8 — Processing begins at a Greenville apartment and will continue on Wed. and Sat. mornings until judging day

January 22 — Entry Deadline

January 28 — Judging set-up at Cokesbury

January 29 — Judging day, 8am –4pm; Judges' Banquet, 6:30pm

February 25 — Hang prints at Arsht Hall, Wilmington

February 27 & March 6 — Audio-Visual presentations, Arsht Hall, 1, 2, and 3pm

March 6 — Exhibit take down

March 9 — Processing begins at a Greenville apartment and will continue until prints are unframed and repacked

Patron's Reservation

Please include me among the Patrons of the 78th WIEP. Amount of donation_____

Name as you wish it to appear in the exhibition catalog: _____

Mail along with your check to John Blankenbaker, P.O. Box 120, Chadds Ford, PA 19317
 Donations to DPS are fully tax deductible. 501©(3) tax exempt number 51-0103286.

Judges' Banquet

Saturday, January 29, 2011 • Delaware National Country Club* • 6:30 pm

Please reserve _____places at the Judges' Buffet Banquet. Enclosed is my check for \$33 per person.
 Name(s) _____

Menu: *Gazpacho • Delaware National Signature Salad • Roasted Sirloin of Beef, au Jus*
 • *Oven Roasted Turkey with Stuffing • Vegetarian Lasagna • Potatoes au Gratin*
 • *Green Beans with Pine Nuts • Buttered Baby Belgium Carrots • Granny Apple Caramel Torte*
 • *Tea and Coffee*

Mail checks to Eileen Furlong, 1406 Shipley Road, Wilmington, DE 19803 **Deadline: January 26**

* DNCC — 400 Hercules Road, Wilmington, DE 19808

WIEP Distinguished Judges

PHOTOJOURNALISM:

Naomi Halperin, Director of Photography, *Wilmington News-Journal*, Wilmington, DE. Naomi graduated from the Syracuse University in 1981. She started her career as a staff photographer at the *Ocean County Observer* in Toms River, NJ and later was a staff photographer at *The Morning Call* of Allentown, Pa. In 1995, Naomi became Photo Editor where she oversaw an award-winning staff of 15 photographers and three photo editors. Naomi served as an Instructor in photojournalism at Lehigh County Community College, and as speaker and panelist for the Associated Press Managing Editor's Conference in 1998 and 1999. She has received numerous awards from the National Press Photographers Association, the Pennsylvania Press Photographers Association and the New Jersey Press Photographers Association. In 1991, 1992 and 1993 her work was featured in a multi-city juried exhibition for NPPA. She was named Director of Photography for the *Wilmington News-Journal* in 2009.

Sammy Somekh, APSA, PPSA, 4*PJ, 4*Editorial, Ramat-Gan, Israel. In 1973, he graduated from The Technion and began a career in architecture and town planning. He was mentored by Jack Jacovides, a prominent Greek photographer, who introduced him to photojournalism. Sammy has won many awards, including the PSA Photojournalist of the Year Competition (2009 Dorothy Smith Award) and the PJ Ollie Fife award for the Best Published Picture of the Year, and has been listed in PSA's Top PJ exhibitors in *Who's Who* in 1995, 2003-2005, 2007 and 2009. He holds the Licentiate-ship and the Associate Award from the Royal Photographic Society of Great Britain, and the Artiste and Excellence Awards from the Federation International de L'Arte Photographique. Sammy has been an International Representative to the PSA International Affairs Committee for many years and in January 2010, the PSA Journal featured his human interest work in the "Distinctive Image" series.

Stephan E. Savoia, Associated Press (AP) Staff Photographer, Pembroke, MA. Stephan has been

a staff photographer for the AP since 1990. He twice was one of a group of AP staff photographers to receive a Pulitzer Prize in Feature Photography. He was the lead photographer of the AP team that was awarded the 1993 Pulitzer for the team's collection of photographs of the 1992 presidential campaign. He was a member of an AP team that was awarded a 1999 Pulitzer for the team's collection of photographs on President Clinton's affair with Monica Lewinsky and the ensuing impeachment hearings. Stephan is a graduate of the State University of New York (SUNY), and received a Masters degree in journalism from the University of Missouri where he studied under renowned editor and photojournalist Angus McDougall. Conferred *honoris causa* in 2005, Stephan is the recipient of a Doctorate of Fine Arts from SUNY, where a permanent collection of his work resides.

PICTORIAL PRINTS:

Maria Da Rocha, Staten Island, NY. Although interested in photography since childhood, Maria became more involved in the mid 1950s. Over the years, she has won various awards and contests. After retirement, photography became a top priority in Maria's life. She became interested in photographing wildlife and nature. Maria is a volunteer photographer for the Wildlife Conservation Society, headquartered at the Bronx Zoo. Her photos have appeared on the Internet, in posters, calendars, greeting cards, textbooks, magnets and magazines. One of her pictures appears on the cover of a technical book on organic pigments, published in January 2002. She is a charter member of the Gateway Camera Club, a member of the Photographic Society of America, and the Metropolitan Camera Club Council.

Jerry Fornarotto, PPSA, 5* ND, 4*EID, 5*CPID, Nutley, NJ. Jerry won the PSA Wildlife Image of the Year in 2008 and 2009, and the EID Image of the Year in 2009. He has been a PSA member since May 2003 and presently serves as Region 14's Director. Jerry is a past president of the Tri-County Camera Club and of the Ridgewood Cam-

(Continued on page 9)

WIEP Distinguished Judges

(Continued from page 8)

era Club, N.J. He has a Citation from the New Jersey Federation of Camera Clubs, and also served as the Citation Chairman of the New Jersey Federation of Camera Clubs. Jerry particularly enjoys lecturing and judging at birding and camera clubs in New York and New Jersey.

Joel Morgovsky, Professor of Psychology, Brookdale Community College, Lincroft, NJ. Joel is an expert in the psychology of photography. He is a member and past chairman of the Portfolio Review Committee of the Soho Photo Gallery, which is the nation's oldest and largest cooperative photo gallery. He has been involved in many presentations and exhibits, including a presentation on "Photopsychology" at the American Psychological Association's 116th Convention in Boston, MA and he served as a curator and participants in "Psychologists in Focus: An Exhibition of Photographs by Psychologists," Soho Gallery, New York, NY. Joel is a frequent lecturer and judge at camera clubs throughout New Jersey, New York and Pennsylvania and is on the speaker's list of the New Jersey Federation of Camera Clubs. Some of his lecture topics include "Self-perception through Photograph" and "Friedlander and Winograd: Shapers of the modern photographic aesthetic."

PROJECTED IMAGES:

John Davis, Jr., APSA, PPSA, 4*CPID, 5*ND, 4*PTD, 3*PJD, Port Orchard, WA. John currently serves as PSA Executive Vice President, Chairman of the Strategic Planning Committee and Planned Giving Committee, and is a Trustee of the PSA Endowment Funds. He has held several other PSA positions, served as president of the Northwest Council of Camera Clubs, and been active in the f:67 Camera Club for a number of years. He has been listed in Who's Who, including some top-in-North-America designations. John has judged at the international exhibition level for several years, given photographic presentations, and instructed photographic courses and workshops. He recently published a series of articles on Nature Photography in the

PSA Journal. While his photographic interests are varied, John concentrates on nature, landscapes and the outdoors.

Maria Drumm, 4*PTD, 3*CPID, 3*PJD, 3*PPD, Baltimore, MD. Maria is an active member of the Baltimore Camera Club. She joined The Photographic Society of America (PSA) in 2006 after living and teaching International Law at a university in China for three years. Maria created and presented many digital slide shows used for educational and entertainment purposes including *Traveling the Silk Road (2008)*; *India: Forts, Palaces Festivals and Ceremonies(2009)*; *All around China* and *Three great Capitals of Eastern Europe (2010)*. For the past three years she has been a presenter at the Annual PSA conference. An avid exhibitor, Maria has won many gold medals including the German Mega Circuit, 2009 and the Photolovers Medal. Her images have appeared on covers for educational brochures and her article, *How to take Great Images at a Hot Air Balloon Festival*, was published in the September 2010 issue of the *PSA Journal*.

Ian Plant, nature photographer, book author / photographer, lecturer, Lorton, VA. Hailed by *Outdoor Photographer* magazine as "an emerging talent in nature photography," Ian has been photographing our natural world for over fifteen years. His photographs and instructional articles have appeared in books and magazines, including *Outdoor Photographer*, *Popular Photography*, *Nature Photographers Online Magazine*, *National Parks* and *Chesapeake Life*. Ian is also a contributing editor to *Nature Photographers Online Magazine*, and writes a regular blog column for *Outdoor Photographer* online. Ian is the photographer/author of eight print books, including *Chesapeake: Bay of Life*, which received critical acclaim from the *Washington Post* and *Baltimore Sun*. Ian is also one of the lead authors and designer of *The Ultimate Guide to Digital Nature Photography*. He leads several nature photography workshops, digital photo tours and online classes every year.

Photoshop Elements

Elements Classes

- Jim Smigie has been offering a 10-week series of Elements classes (Version 6 or later) on Thursday evenings in the Cokesbury Village **Community Room, Level A** from 7:30—9pm. The December 2, 9, and 16 classes complete the program. No classes are scheduled after December 16.
- Pete Lounsbury will hold a free-style workshop applying Photoshop

Elements to create photographic artwork. The workshops are held from **7 to 9pm** at the Newark Senior Center the **second Wednesday of every month**. These workshops are sponsored by the Senior Surfers, www.nscseniorsurfers.com/. Though there are computers in the center, it is recommended that you bring a laptop loaded with a current version of Elements. For information, contact Pete at lounsburyus@comcast.net.



Lighthouse Lane by Helen Gerstein
One of three prints to receive the high score of 25 in the November print competition.

Assigned Subjects

January 2011 — Rain

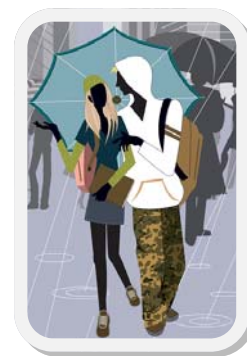
February 2011 — *Glassware*

March 2011 — *Greater than 1 second exposure*

April 2011 — *Ships and Boats*

September 2011 — *Mist or Fog*

October 2011 — *Selective Focus*



November 2011 — *Land Vehicles in Motion*

January 2012— *From Above*

February 2012— *Interiors*

March 2012— *Bridges*

April 2012— *Waterfalls*

January 31 Speaker Sammy Somekh

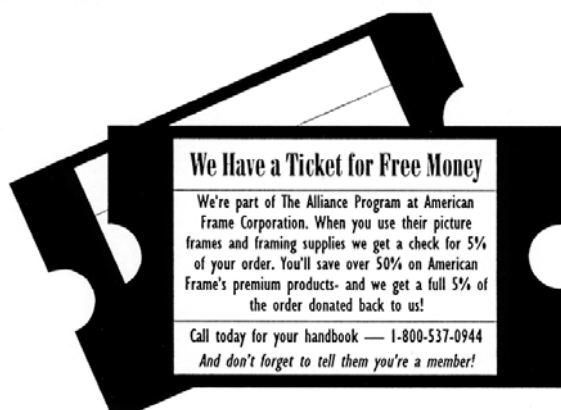
We are honored to have WIEP judge Sammy Somekh from Ramat-Gan, Israel, stay over after his weekend judging duties to present the January 31 program at 7:30pm. Please refer to page 8 for Mr. Somekh's bio.

Join us at 6pm for dinner with the speaker in a private Cokesbury dining room. Reservations should be made in advance to John Hamilton at deljohn@aol.com or 302.479.0222. Dinner cost is \$17.50, all inclusive. Sorry, no walk-ins.

Help DPS Keep You Informed

Keep DPS up to date. In this age of electronic communication we all need to keep our friends informed about how to reach us. Please check your Profile in the Members Only Web site and correct or add information so that DPS can stay in touch with you with club announcements and the *Reflector*. We won't sell or give away your information.

- On www.delawarephotographicsociety.org click on the "Members Only Website" announcement.
- Log in to Members Only with your user name and password.
- Click on My Stuff or My Personal Info
- Click on DPS Profile. Then review your information and update if needed.



For orders placed by DPS members, American Frame Co. rebates five percent of all framing materials back to the Society. Members have done business with AFC for over 25 years and rate their quality, selection, pricing and service as consistently excellent.

Go to www.Americanframe.com or call 800. 537.0944 to request a catalog. Please provide reference number **P 163** when ordering so the Society will receive credit for the purchase and be awarded the rebate.



The Photographic Society of America (PSA) is the largest organization of its kind in the world, bringing together amateur and professionals in all the varied fields of photography, including color slides, nature, pictorial prints, stereo (3D), electronic photography, video/motion pictures, photojournalism, travel photography, and devotees of every process in which the world-wide membership is interested. Help from experts and educational programs is available to all members. Find out more about the PSA from these websites: www.psa-photo.org and delawarephotographicsociety.org.