



The Reflector



Delaware Photographic Society www.delawarephotographicsociety.org
Volume 60, Issue 9

December 2008 – January 2009



Morning Glory by John Hamilton
John took this award-winning digital image by aligning the sun behind the flower to achieve the striking back lighting.

Another Perspective

What is WIEP and how does it work???

by Lynn Maniscalco

It's time to start thinking about WIEP—our upcoming 76th Wilmington International Exhibition of Photography! Every member should plan to enter at least several of the six sections, with four images comprising one entry in any particular section. Entries in Large Monochrome and Large Color Prints may be up to 16"x20", including the mount. Small Color and Photojournalism Print entries may be up to 8½"x12", including the mount. Note that mounting is optional. The two projected sections (Open and Pho-

tojournalism) accept slides or digital submissions up to 500KB. For further entry details, refer to the information on our Web site at www.delawarephotographicsociety.org. The photojournalism images should be storytelling—news, sports, or human interest.


Although local entrants have been very successful in past years, those who think they'd have no chance to win against top exhibitors should be aware that six of the medals to be awarded are reserved for local entrants, plus an additional


(Continued on page 2)

Annual Holiday Party and Print Exchange

December 15 • 7:30pm

Join us for the popular DPS holiday party and print exchange. Rather than the monthly competitions the evening will include:

 A party — Everyone is asked to contribute a holiday treat to be shared —such as cookies or cake.

 A print exchange (optional)
Bring one of your mounted, gift wrapped prints to exchange with another member. Make it one of

your best, as a member will become the proud owner of your artwork. Framing is not necessary.



Gift Exchange (optional)

Everyone who would like to do so may exchange an inexpensive gift-wrapped photo-related object.

Guests are always welcome. It is not necessary to sign up for the party. For more formation, contact Carole Clarke at cnclarke@aol.com or 610.358.5191.

Calendar of Events

• **December 1**

7:30pm — Instruction Night

• **December 8**

7:pm — Board/WIEP Meetings

• **December 14**

2pm — Field Trip (pg. 7)

• **December 15**

7:30pm —Holiday Party

• **January 5**

Deadline for January 12 projected image entries

7:30pm — Instruction Night

• **January 12**

7:30pm—Projected Image Competition

• **January 19**

7:30pm — Print Competition

• **January 24**

8am-4pm—WIEP Judging (pg. 4)

• **January 26**

6 pm —Dinner with Speaker

7:30pm — Speaker Program

Cokesbury Auditorium Level C

Inside this issue... WIEP Entry Preparation..... page 5
Speaker Program: Exploring the Dragonpage 5
December Field Trip.....page 7

**DELAWARE PHOTOGRAPHIC SOCIETY
2008-2009**

President — Lynn Maniscalco
302.478.6423 / Ltmphoto@juno.com

Vice President — Bob Hunt
302.764.1363 / makingcopy@aol.com

Recording Secretary
Eleanor Blankenbaker — 610.388.1305
ezblankenbaker@yahoo.com

Treasurer/Corp. Secretary
John Blankenbaker — 610.388.1305
John.Blankenbaker@comcast.net

Future Exhibition Chair
Dianne Carnegie — 410.398.2397
dicarnegie@msn.com

Education Director — Karl Leck
610.388.0298 / karleck@verizon.net

Projected Image Director — Ken Seeneey
610.497.1554 / seeneeyk@comcast.net

Print Director — David Hutton
302.731.4815 / dgh36@mac.com

Program Director — Bob Coffey
610.388.2741 / Bobcoffey@aol.com

Reflector Editor — Sharon Coffey
610.388.2741 / SESCoffey@aol.com

Membership — Ruthann King
302.229.6879 / raking44@verizon.net

Field Trips — Steven Sieja
302.547.2344 /
ssieja@mikenbuilders.com

Awards Committee — Sharon Coffey
610.388.2741 / SESCoffey@aol.com

Equipment Co-chairs — Bud Easler
610.444.2581 / aeasler3@verizon.net

Paul Stambaugh — 302.239.5764
prsjii@comcast.net

Publicity Chair — John Hamilton
302.479.0222 / deljohn@aol.com

Judges Chair — Tom Tauber
610.626.1579 / tetauber@comcast.net

Standards Chair — Jane Strobach
302.994.8167 / jstrobach@yahoo.com

DPS Webmaster — Mark Reed
302.655.1439 / mark4reed@comcast.net

The Delaware Camera Club (DCC) was established January 28, 1931. DCC is a charter member of the Photographic Society of America and The Delaware Valley Council of Camera Clubs. In 2002 the name was changed to the Delaware Photographic Society (DPS) and the Society became a tax deductible educational organization.

Another Perspective

(Continued from page 1)

gold medal for a local "Peoples' Choice" acceptance. The closing date is January 17, 2009, but don't wait until the last day to enter.

Entries are already coming in from many countries. Volunteers will be needed to help unpack them at the Greenville processing location beginning on January 3, and for several Wednesdays and Saturdays thereafter. It's a good opportunity for camaraderie with fellow club members and a unique chance to see some great work close up. Members who deliver and pick up their entries (at one of the processing sessions) can enter them at the lower fee offered to entrants who don't need their work mailed back after judging.

We will need volunteers to set up three judging rooms at Cokesbury on Friday, January 23. The Open Projected entries will be judged in the auditorium. Two other rooms used for judging prints and photojournalism entries must be darkened with opaque plastic.

Our out-of-town judges will be hosted by club members. If you can provide overnight accommodations, or meet a flight at Philadelphia Airport, you will have a unique opportunity for one-on-one time with a knowledgeable judge and will also be invited to a Friday night party for the nine judges and key exhibition personnel. If you are able to volunteer as a host, please contact Eileen Furlong at 302.764.6922 or efurlong@comcast.net.

On judging day, Saturday, January 24, we will need volunteers as score keepers, print handlers, projectionists, and number callers. A continental breakfast will be provided, and there are several options

for lunch -see more details are on page 5. Whether or not you can help that day, be sure to sign up for the judges' banquet that evening to have dinner with the judges. Each judge will have five minutes to present their personal work, and the medal winners in each section will be exhibited.

The following week, slides will be scanned in preparation for the projected show. Volunteers will be needed for matting and framing of the selected prints and for the hanging of prints at Arshat Hall on February 20.

The exhibition will run from Sunday, February 22, until Sunday, March 1. Volunteers will be needed to greet visitors on both Sundays and take down the prints at the close of the show on March 1. Then, it's back to the processing location every Wednesday and Saturday to repack slides and prints for return to the entrants.

There are other ways for members to be involved, such as, helping with publicity or soliciting catalog advertisers. Consider making a tax-deductible contribution and have your name listed among the supporting patrons in the exhibition catalog.

As you can see, the biggest DPS event of the year depends on many volunteers, and the participation of EVERY member is needed to enable DPS to continue to present this annual exhibition. If you haven't already decided how you will contribute, read through the list again and plan how you can help.

Sign-up sheets will be available at meetings, and you may contact Bob Hunt at makingcopy@aol.com or Dianne Carnegie at 410.398.2397 / dicarnegie@msn.com for additional information.

Instruction Night Schedule



Instruction Night sessions are held the first Monday of the month, October – May in the Cokesbury duPont Pavilion at 7:30 p.m.

- December 1: *M&M by B&K*

A well-presented print gets a more respected look from viewers. Galleries and museums usually show prints in a simple frame with a 2"-4" wide window mat. DPS monthly competitions require prints to be stiffened and allows the use of window mats. Like many things in photography there are easy ways and difficult ways to get the desired result.

On Monday, December 1, Bob Hunt and Karl Leck (B&K) will show how easy it can be to mount and mat (M&M) prints for competition

and exhibition. They will show the tools and materials and tell where to get them. They even promise to mention their favorite 'tricks of the trade'. Armed with this information and a little practice, you can beautifully finish your great photographs for the Wilmington International and the Society's frequent exhibits.

- January 5: *Making a Photo Story* by Bob Fleischer

We welcome the return of Bob Fleischer, one of the judges of the 2008 Photo Story competition. Bob will show and discuss some of his work to help us better understand photo stories and how to build them. As a professional in this field, Bob brings experience and expertise for us to learn from. In addition, Photo Story Chair, John Toutkaldjian, will show the best-in-show photo story from last year's competition.

- February 2: *Photographing Moving Subjects*

- March 2: *Camera Handling and Point of View*

- April 6: *Photographic Gadgets and Resources*

- May 4: *A Photographer Who Influenced Me*

Continuing Photoshop Elements

- **Beginners Classes**

John Haedo conducts free weekly digital classes at 7pm on Thursday evenings at Edgemoor Comm. Center, 500 Duncan Road, Wilmington. December classes will meet on the 4th, 11th, and 18th. The December 18 class will cover preparing digital image entries for WIEP (see pg.5). For more information, contact John at john581@comcast.net.

- **Newark Classes**

Classes are also taught by Pete Lounsbury in Room 2 at the Newark Sr. Center, 200 White Chapel Drive, Newark, DE 19713 at 7 p.m. on the second Tuesday of each month; www.newarkseniorcenter.com. For class information, please contact Pete at lounsburyus@comcast.net.

Vignettes



- Instruction Night is held the first Monday of the month at 7:30pm.

- Competition nights are held on the second and third Mondays at 7:30 pm.

- Program night is the last Monday of the month at 7:30 pm.

- Location: Cokesbury Village, DuPont Pavilion, 726 Loveville Road, Hockessin, DE 19707. Guest speaker programs are presented in the Cokesbury auditorium.

- Membership dues should be addressed to: DPS Treasurer, John Blankenbaker, P.O. Box 120, Chadds Ford, PA 19317. Dues are \$35 for individuals, \$25 for others at the same address, and half the individual for junior or nonresident members. Dues for first-year members are \$20 per person.

- *The Reflector* is published by the Delaware Photographic Society, and printed by Academy Printing. No material may be reproduced without written permission. Contribution deadline is the third Monday of the month. Send announcements or articles to Sharon Coffey at 48 Partridge Lane, Kennett Square, PA 19348 or SESCoffey@aol.com.

- DPS members are encouraged to participate in our Yahoo group, DPS-Exchange. For information, go to DPS-Exchange@yahoo.com

- Visit our Web site at:

www.delawarephotographicsociety.org



This program is made possible, in part, by grants from the Delaware Division of the Arts, a state agency dedicated to nurturing and supporting the arts in Delaware, in partnership with the National Endowment for the Arts.

76th Wilmington International Exhibition of Photography

WIEP JUDGES:

PROJECTED IMAGE

Barbara Lewis-White, PPSA, 5* CPID, 5* ND, Long Branch, NJ
Dana Vannoy, APSA, PPSA, 5*ND, 4*CPID, 4*PTD, Williamsburg MI
Elias Rivera, PPSA, 3*CPID, 3*ND; Flushing, NY

PHOTOJOURNALISM

Pete Souza, magazine photographer; Washington, DC
Keith Gillet, 5*PJD, news photographer and editor; Belleville, IL
Naomi Halperin, newspaper photography director; Allentown, PA

PICTORIAL PRINTS

Joseph Rossbach, fine art nature and landscape photographer, instructor, lecturer; Annapolis, MD
Jim Graham, two-time Pulitzer nominee, photographer, exhibitor; Centreville, DE
Robert West Madden, former National Geographic photographer, picture editor and Director of Design; Stevensville, MD

76th WIEP Schedule

- January 17, 2009
Closing date for entries
- Saturday, January 24, 2009
8:30am—4pm, Judging - Cokesbury
6:30pm—Judges' Banquet
- February 22 and March 1, 2009
Projected Image Presentations
Arsht Hall - 1pm, 2pm, and 3 pm

Processing location to be announced...

The processing location for the 76th WIEP will be announced via e-mail and at meetings. If you are unsure where to go, contact Bob Hunt at makingcopy@aol.com or Dianne at dicarnegie@msn.com.

JUDGING DAY MEALS

- A free continental breakfast will be provided for workers at 8 a.m. on Level C.

- Lunch :
A buffet lunch will be available in the Cokesbury dining room at a cost of \$9 per person. You will not be able to purchase tickets that morning, so sign up now by using the form provided on page 5.

You may purchase sandwiches and soup at the "Country Store" on Level A. However, in order to make sure the store stocks enough food, contact Lynn before January 22 at Ltmphoto@juno.com.

Another option is to bring your own lunch.

- The Judges' Banquet will be held at the Delaware National Country Club on Saturday, January 24. The cash bar opens at 6:30 pm and the buffet dinner will be served at 7:15pm. Guests are welcome. The reservation form and menu are provided below.

Judges' Banquet

Saturday, January 24, 2009 • Delaware National Country Club • 6:30 pm

Please reserve _____ places at the Judges' Buffet Banquet. Enclosed is my check for \$33 per person.

Name(s) _____

Menu: *Delaware National Signature Salad • Roasted Sirloin of Beef, au Jus • Baked Fresh North Atlantic Salmon, Shrimp Sauce • Vegetarian Lasagna • Potatoes au Gratin • Green Beans with Pine Nuts Buttered Baby Belgium Carrots • Chocolate Mouse • Tea and Coffee*

Mail to Eileen Furlong, 1406 Shipley Road, Wilmington, DE 19803

Deadline: January 21

Exploring the Dragon: Adventures in China

Speaker Night

January 26, 2009 • 7:30 p.m.

Exploring the Dragon: Adventures in China

Cokesbury Auditorium

WIEP judge Dana Vannoy will stay over after her judging duties to present the guest speaker program on January 26.

This sound and image program, *Exploring the Dragon: adventures in China*, will embrace her 2008 adventure in mainland China, Tibet, and Hong Kong. Images include the highlights of Beijing including the Forbidden City, the Great Wall, and everyday life in this modern urban metropolis; the ancient history of the old capital, Xian, home to the 2000 year old Terra Cotta Army, and life in a Chinese farm village; a

cruise down the Yangtze River and the lesser three gorges; life in Lhasa, Tibet at 12,000 feet elevation; a visit to Chengdu and the Panda Bears; and the breathtaking experience of cosmopolitan Hong Kong.

If possible, join us for dinner with the speaker at 6 pm in a private Cokesbury dining room. The cost for dinner is \$16 all inclusive. Please make reservations by signing up at a January meeting or by contacting Program director Bob Coffey at bobcoffey@aol.com or 610.388.2741.

WIEP Entry Preparation

Preparing Digital Entries

December 18 • 7pm

Edgemoor Community Center

If you would like guidance in preparing your digital entries for monthly projected image competition, for the WIEP and/or slide shows, come to a special session by John Haedo and Bob Coffey. The emphasis will be on proper resizing the image files from your camera to meet the pixel dimensions and file size requirements for projected images. In addition, image optimization will be reviewed. This will be held at Edgemoor Community Center, 500 Duncan Road, Wilmington. For more information, contact John Haedo at john581@comcast.net or Bob at bobcoffey@aol.com.

Board/WIEP Meetings

Two DPS meetings are scheduled for Monday, December 8, at Cokesbury. The first is a board meeting at 7pm. Please send agenda items to Lynn Maniscalco at Ltmphoto@juno.com. A main topic for discussion will be uses for this year's grant money.

The second, an important WIEP meeting will follow at 8 p.m. Anyone who would like to be involved in WIEP is invited to attend.

Patron's Reservation

Please include me among the Patrons of the 76th WIEP.

Name(s), as you wish it to appear in the exhibition catalog:

Mail to John Blankenbaker, P.O. Box 120, Chadds Ford, PA 19317

Deadline: February 10

Donations to DPS are fully tax deductible.

The 501(c)3 tax exempt number is 51-0103286.

Judges' Buffet Lunch

Saturday, January 24, 2009 • Cokesbury Village

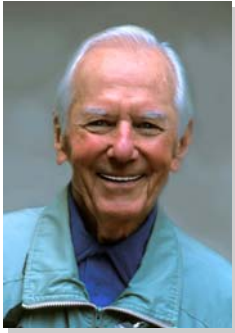
Please reserve _____ places at the buffet lunch. Enclosed is my check for \$10 per person.

Name(s) _____

Mail to Bob Hunt, 30 Cragmere Road, Wilmington, DE 19809

Deadline: January 17

Questions & Answers



Contributed
monthly by
Erik Kissa

For more information on photographic equipment and techniques visit me at www.psa-newmember.org, open Consultation Services, and click on Exploring Equipment and its Use.

Q: *Is the Nikon D90 a lightweight low cost version of the Nikon D300?*

A: I answered a similar question in October, but I have meanwhile used the Nikon D90 and have a better feel of it. For me, the D90 is not a reduced size D300 but an improved Nikon D70. The body of the D90 is very similar to the D70, only slightly heavier and larger than the D70. The D90 is a small but a powerful camera. Several features have been borrowed from the D300 and some new ones are the first for Nikon. Live View is now readily accessible and video mode has been added.

The Nikon D90 is certainly an excellent travel camera. While the D90 is not a D300 at half the price, the features of the D300 missing in the D90 are not essential for travel photography.

Two useful features of the D70 have been discontinued: the maximum sync speed of flash has been reduced from 1/500 sec of the D70 to 1/200 sec in the D90. The Compact Flash card has been replaced with a small SD or SDHC card.

Q: *I read your article in the Reflector and since I shoot in RAW, I was wondering what exactly did you mean by saying "...the histogram on the LCD panel of the camera can be misleading." I usually evaluate the histogram while shooting and find that my shots don't always look as good as anticipated. Can you help?*

A: I will try to explain how RAW and JPEG work. A digital RAW file is a record of raw data from the sensor in the camera. The only camera settings that affect the raw file are the ISO value, the shutter speed, and the aperture of the lens. When you convert the RAW data to a color image, you can control the formation of the image and its properties. You adjust the variables to make the picture you like.

When shooting JPEG, the software in the camera processes the data from the sensor, produces a color image and compresses it as a JPEG file. The histogram displayed by the camera is the histogram of an image you would get when shooting JPEG at the current camera settings. The histogram is affected by the default settings of the processor in the camera and may be different from the histogram you will see in the RAW converter of Photoshop. Consequently, the histogram displayed by the camera is only a rough guide to proper exposure, unless you shoot JPEG.

If the difference between the histogram of the camera and the histogram in the RAW converter is consistent and predictable, you can use the histogram of the camera by making a correction. The size of the

correction can be determined by trial and error.

Q: *Which camera did you use last summer in Europe?*

A: My selection of the photo gear depends mainly on the purpose of travel — is it work, pleasure or something in between. The other factor is the available mode of transport. Restrictions of the airlines limit how much equipment can be carried. The risk of losing checked luggage is real. A car or a van is the most convenient means of transportation. Three DSLR cameras with several lenses, a tripod and the needed accessories can be taken along. However, when having to walk long distances, the lightest equipment that can get the job done is the best.

Last summer in Estonia I had to walk most of the day and climb in old castles. In the Old Town of Tallinn, listed as a UNESCO World Heritage Site, cars are not allowed. My lightweight photo gear consisted of a Nikon D70 (now replaced by a D90), Nikon 24-120mm f/3.5-5.6 VR lens, a Nikon 30mm f/2.0 lens and a 50mm f/1.4 lens. I had a Nikon 12-24mm lens as well, but did not need it. The equipment was more than adequate. So far, four of the prints have been accepted by international exhibitions.

A very useful tool was the Canon 850IS point-and-shoot camera carried on my belt like a cell phone. The small Canon has optical stabilization, an optical viewfinder and an 8MP sensor. When walking to an old castle in Viljandi, I left my full gear in the hotel because it was raining.

(Continued on page 7)

Questions & Answers

(Continued from page 6)

Suddenly, the sun came out and shone like a spotlight on the church. The little Canon made a beautiful picture (below).



The light was beautiful and I took several pictures on the castle hill. This is an example of the basic rule in photography — always have a camera with you! I would have taken the waterproof Pentax Optio W60 along as well, but I did not have it then.

If I had been a Canon DSLR shooter, I would have taken the Rebel along, but the Canon 24-105mm f/4 IS USM zoom is a little too short. The Canon 18-200mm f/3.5-5.6 IS may not be a better choice. If the Canon 18-200mm lens

is like its Nikon counterpart, the zoom range above 105mm will not suit a discriminating photographer.

Q: *When you were looking for a rain-proof system did you consider another DSLR system? The Olympus E-3 has an excellent weather proofing system when attached to Pro-grade lenses. The E-3 users abuse the camera by letting it get soaked in rain, exposing it to a sand storm, and other conditions when most cameras would just die on you. Did you buy a waterproof point-and-shoot camera due to the cost of buying into another DSLR system? Or was it something else?*

A: The Olympus E-3 is a rugged camera indeed with fine optics. If shooting in rain had been more than an occasional activity, I would have considered the Olympus E-3 or the latest in the line. However, I needed a camera to supplement my Nikon system for shooting street scenes in rain. The point-and-shoot Olympus 1030SW and the Pentax Optio W60 are truly water-

proof. They can be operated in water four meters (13 feet) below the surface. Their optical quality is not a match for the DSLR optics, but in rain, pictures the mood of the scene is more important than the ultimate sharpness. A waterproof pocketable camera does not add much to the load to be carried and is always there when needed.

When buying new equipment, I ask myself — is my existing gear adequate for doing the job? If not, what are the options for improving the camera system? Is the cost of the improvement reasonable? Quality comes first, but cost effectiveness is an important factor. Would the expensive tool make a significantly better picture or be just more convenient to use? Are there downsides in addition to the expense?

The Pentax Optio W60 was the answer to these questions and the quality of its images has exceeded my expectations.

Erik Kissa

Send questions to ekissa@aol.com

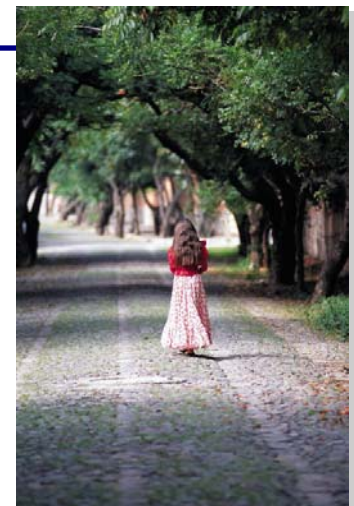
December Field Trip — Historic New Castle

Sunday, December 14, 2 pm

A December field trip is planned to Old New Castle, Delaware, site of the colonial capital of Delaware and first Delaware state capital. This picturesque community, “all dressed up for the holidays”, will provide a variety of photo ops. We will meet in front of the courthouse at 2 p.m., stroll the historic cobblestone streets of town and photograph the scenic river,

charming architecture, people, and shops. After dark, we’ll have the opportunity to practice night photography with the brilliant holiday lights. Ray Firmani is quite familiar with photographing Old New Castle and will be along to help and offer suggestions.

For additional information, contact Steven Sieja at 302.547.2344 or ssieja@mikenbuilders.com.



Exhibits



Window-Reflections by Bill Leitzinger

• Art Exhibit Showcases Photographs by Bill Leitzinger

Aloysius Butler & Clark (AB&C) is exhibiting a collection of 40 photographs by Bill Leitzinger through February 28, 2009. The exhibit is free to the public and will be open

on weekdays from 8:30 a.m. to 4:30 p.m. at AB&C, 819 Washington Street, Wilmington, DE. Off-street parking is available at Isaacs Garage (8th and Washington streets).

Longtime Delaware resident Bill Leitzinger has a photographic history stretching back 35 years, which includes work done throughout the US, Canada, Europe and Japan. Having studied photography

at the University of Delaware and the Rhode Island School of Design, Leitzinger works in a photojournalist style, often capturing his subjects from unique perspectives. His work is frequently exhibited in Delaware art galleries, and most

recently in the Hudson Gallery at the Gibby Center for the Arts in Middletown, the Delaware City Arts Center, Brandywine Creek State Park and the Biden Center at Cape Henlopen State Park.

• Longwood Exhibit Update

by Bob Coffey

Feedback received regarding the recent DPS exhibits at Longwood Gardens has been highly complimentary — both from Longwood visitors and Longwood staff alike. I have been very impressed with how gracious and accommodating Joe Lomicky and other members of Longwood staff have been. Two exhibits are planned for 2009, and DPS looks forward to a continued working relationship with Longwood Gardens.

Wilmington-In-Focus Project

Contributed by Bob Coffey

The WIF project is progressing nicely, with nearly 200 participants from the elementary school level and some high school students as well. The disposable cameras that were distributed to the younger students have been submitted, processed, and returned to them. DPS volunteers then helped them select their two best photos to enter in the contest. Judging will take place the first week of December. Once they have been judged, the winning images from three categories will be enlarged, framed and hung on display during Wilmington First Night festivities on Dec. 31. The winners will receive digital cameras as prizes, as well as medals and honorable mention ribbons.

All participants will receive certificates of participation signed by the mayor. This project was the result of Steve Furlong and his committee; Bob Coffey, Eileen Furlong, Marvin Gerstein, Bob Hunt, Ken Seeney, Jeff Smith, and Jane Strobach. Other DPS volunteers who provided instruction were Renee and Noel Brandon, Bob Leitch, Helen Gerstein, Dick Greenwood, Vicki Kelch, and Sandra McCarthy. The program has been received at all the participating schools and organizations with considerable enthusiasm. The corporate sponsors are AstraZeneca and JP Morgan Chase. Cameras Etc. supported the project with discounted pricing for the cameras, processing and digital cameras for prizes.



The Photographic Society of America (PSA) is the largest organization of its kind in the world, bringing together amateur and professionals in all the varied fields of photography, including color slides, nature, pictorial prints, stereo (3D), electronic photography, video/motion pictures, photojournalism, travel photography, and devotees of every process in which the worldwide membership is interested.

Help from experts and educational programs is available to all members. Find out more about the PSA from these websites:

*www.psa-photo.org and
delawarephotographicsociety.org.*